



Course Description
Handbook
Wamego High School
2011 - 2012

WAMEGO HIGH SCHOOL 2011 – 2012

Ag Education	Communications Technology	FACS	Science
Agriscience 1Credit	Photography ½ Credit	Orientation to Early Childhood Dev. 1Credit	Biology 1Credit
Animal Science 1Credit	Advanced Photo. ½ Credit	Foundations to Early Childhood Dev. 1Credit	Anatomy & Physiology 1Credit
Horticulture 1Credit	Graphic Arts 1Credit	Functions to Early Childhood Dev. 1Credit	Environmental Science ½ Credit
Nursery & Landscape 1Credit	DTP – Newspaper 1Credit	Human Growth and Dev. ½ Credit	Field Biology ½ Credit
Agribusiness 1Credit	Adv. DTP – Newsp. 1Credit	Family Studies ½ Credit	Zoology ½ Credit
Ag Welding 1Credit	DTP – Yearbook 1Credit	Nutr. & Welln. ½ Credit	Botany ½ Credit
Ag Fabrication 1Credit	Adv. DTP – Yrbk. 1Credit	Culinary Arts I ½ Credit	Geology ½ Credit
Ag Structures 1Credit	Broadcasting 1Credit	Culinary Arts II ½ Credit	Atmospheric Science ½ Credit
Ag Communications 1Credit	Adv. Broadcasting 1Credit	Food Science ½ Credit	Chemistry 1Credit
Art	Construction/Design and Pre-Construction	Foods OJT ½ Credit	Physics 1Credit
Draw. & Paint. ½ Credit	Tech. Ex. ½ Credit	Career & Life. ½ Credit	Biology Lab ½ Credit
Adv. Draw. & Paint. ½ Credit	Drafting/CAD 1Credit	Consumer Ed ½ Credit	Social Studies
Sculp. & Cer. ½ Credit	Arch. Drafting ½ Credit	Career & Comm. Con. ½ Credit	World Geography
Sculp. & Cer. II 2 ½ Credit	Woods I 1Credit	Teaching as a Career	World History ½ Credit
Photography ½ Credit	Woods II 1Credit	Teaching Internship	American History 1Credit
Adv. Photo. ½ Credit	Constr. Expl. 1Credit	Math	AP United States History 1Credit
Graphic Arts 1Credit	English/ Language Arts	Integrated Algebra 1Credit	Psychology ½ Credit
Business & Computers	English I 1Credit	Integrated Geometry 1Credit	AP Psychology 1Credit
Comp. Appl. IA ½ Credit	English II 1Credit	Advanced Math I 1Credit	Sociology 1Credit
Comp. Appl. IB ½ Credit	Accelerated English II 1Credit	Adv. Math II 1Credit	Economics ½ Credit
Personal Finance ½ Credit	English III 1Credit	AP Calculus 1Credit	American Government ½ Credit
Vis. BASIC Program. ½ Credit	AP Writing 1Credit	Adv. Math Lab 1Credit	AP Amer. Government 1Credit
Accounting I 1Credit	English IV 1Credit	Int. Geometry Lab 1Credit	AP European History 1Credit
College Accounting 1 Credit	AP Lit. & Comp. 1Credit	Int. Algebra Lab 1Credit	World Language
Personal Law IA ½ Credit	Oral Comm. ½ Credit	Music	Spanish I 1Credit
Personal Law IB ½ Credit	Non-Comp. Debate & Forensics ½ Credit	Music Appreciation ½ Credit	Spanish II 1Credit
Adv. Com. Appl. & Cert. (ACAC) 1Credit	Novice/Adv. Debate ½ Credit	Music Theory & Tech. ½ Credit	Spanish III 1Credit
Entrepreneurship 1Credit	Forensics ½ Credit	Jazz Band ½ Credit	Additional
Web Page & Multi-Media Design ½ Credit	Drama I ½ Credit	Band ½ Credit	Peer Counselor ½ Credit
Work Tech. (OJT) 1Credit	Drama II ½ Credit	High Voltage ½ Credit	Peer Tutor – Application 1Credit
		Concert Choir ½ Credit	Independent Study ½ Credit
		Physical Education	Student Aide 0 Credit
		Physical Education 1Credit	
		Adv. Physical Ed. ½ Credit	
		Weightlifting ½ Credit	
		Outdoor Rec. ½ Credit	
		Lifetime Fitness ½ Credit	
		Adv. Weights ½ Credit	

TABLE OF CONTENTS

	PAGE
AVAILABLE COURSES	2
GENERAL INFORMATION	4 - 6
GRADUATION REQUIREMENTS	4 - 6
CORE: ENGLISH AND LANGUAGE ARTS	7 – 11
CORE: MATH	11 – 14
CORE: SCIENCE	14 – 16
CORE: SOCIAL STUDIES	16 – 19
CTE: AGRICULTURE EDUCATION	20 – 22
CTE: BUSINESS AND COMPUTERS	22 – 25
CTE: COMMUNICATIONS TECHNOLOGY	25 – 28
CTE: CONSTRUCTION	28 – 29
CTE: DESIGN AND PRE-CONSTRUCTION	29 - 30
FACS: EARLY CHILDHOOD EDUCATION	30 - 31
FACS: CULINARY ARTS AND HOSPITALITY	32 – 33
FACS: FAMILY AND COMMUNITY SERVICES	33 - 34
FACS: TEACHING TRAINING	35 - 36
FINE ARTS: ART	36 – 37
FINE ARTS: MUSIC	37 – 38
PHYSICAL EDUCATION	39 - 42
WORLD LANGUAGE	42 - 43
ADDITIONAL	43 – 44
CTE COURSE SEQUENCE CHARTS	
AGRICULTURE EDUCATION	45
BUSINESS AND COMPUTERS	46
COMMUNICATIONS TECHNOLOGY	47
CONSTRUCTION/DESIGN AND PRE-CONSTRUCTION	48--49
FACS EARLY CHILDHOOD EDUCATION	50
FACS CULINARY ARTS AND HOSPITALITY	51
FAMILY AND COMMUNITY SERVICES	52
TEACHING TRAINING	53

GENERAL INFORMATION

GRADUATION REQUIREMENTS FOR WAMEGO HIGH SCHOOL ARE SET BY USD 320 BOARD OF EDUCATION

WAMEGO HIGH SCHOOL GRADUATION

Course	Credit
English	4
Science	3
Integrated Algebra	1
Integrated Geometry	1
Advanced Math I	1
American History	1
American Government	.5
World Geography	.5
Other Social Studies	1
Fine Arts	1
Oral Communications	.5
Computer	.5
Physical Education	1
Electives	8
Total	24

KANSAS REGENTS QUALIFIED ADMISSIONS

Course	Credit
English	4
Chemistry or Physics	1
Biology, Anatomy & Physiology <i>OR</i> Earth Science	1
Integrated Algebra	1
Integrated Geometry	1
Advanced Math I	1
American History	1
American Government	.5
Other Social Studies	1
World Geography	.5
Physical Education	1
Oral Communications	.5
Electives	9.5
Total	24

KANSAS STATE SCHOLAR

Course	Credit
English	4
Biology	1
Chemistry	1
Physics	1
Integrated Algebra	1
Integrated Geometry	1
Advanced Math I	1
Additional Math	1
American History	1
American Government	.5
Other Social Studies	1
World Geography	.5
Physical Education	1
Oral Communications	.5
World Language	2
Electives	6.5
Total	24

Graduation Requirements in addition to the courses listed in the above tables:

- ⇒ Successful completion of Senior Interview.
- ⇒ DMCT – Must achieve 80% competency or above .
- ⇒ Students must enroll in at least 2 core curriculum courses each semester.
- ⇒ 8 Semesters of attendance (Exception: Early Out Policy).
- ⇒ A test-out option is available for students meeting specific requirements (see student handbook).
- ⇒ No student can participate in graduation activities until **All** graduation requirements have been met.
- ⇒ Grades for teacher aides and office assistants will be posted on transcripts but credit does not count toward graduation.
- ⇒ No credit will be given to any student who has not fulfilled all obligations.
- ⇒ No more than 2 units of the minimum requirements may be met by correspondence courses. The courses may not be used to substitute for required courses.

COURSES STUDENTS MUST TAKE AT SPECIFIC GRADE LEVELS

9th	10th	11th	12 th
English	English	English	English
Science	Social Studies	Am. History	Am. Gov.1/2
Math	Math	Math	
Social Studies	Science	Science	

KANSAS BOARD OF REGENTS QUALIFIED ADMISSIONS REQUIREMENTS

To qualify for admission to Kansas Regents universities (Emporia State University, Fort Hays State University, Kansas State University, Pittsburg State University, University of Kansas and Wichita State University) you must meet one of the following requirements:

- Complete the pre-college curriculum with at least a 2.0 grade point average (GPA) on a 4.0 scale; or,
- Achieve an ACT score of 21 or above; or,
- Rank in the top one-third of your high school's graduating class.

Pre-college curriculum:

For more information, contact either the counselors or the WHS Student Handbook.

W.H.S. INFORMATION

MINIMUM NUMBER OF CLASSES FOR STUDENTS

Students must take seven classes, except during their 8th semester when they may opt for an early out. (See WHS Student Handbook for explanation). Students also have the option of taking more than seven classes by taking a zero hour class.

ACTIVITIES AND ATHLETICS

Any student who participates in any event sponsored by the Kansas State High School Activities Association must be enrolled in five courses of unit weight during that semester and must have passed five credits during the previous semester. Any student who desires to participate at a NCAA I or II School must be certified by the NCAA Initial Eligibility Clearinghouse. Please see the WHS Guidance Counselors or www.ncaa.org for additional details.

REPORTING STUDENT PROGRESS

The semester grades earned by a student appear on the permanent transcript. If a parent would like a progress report or additional grade reports sent electronically throughout the semester from a specific teacher, arrangements can be made by calling the teacher or the counselor.

GRADES

The following grades may be earned by a student in a course during a grading period.

A	Excellent
B	Good (Above Average)
C	Average
IP	In Progress – student has either missing or has achieved a less than 70% on a summative assessment. Student is working with his/her teacher & preparing to take another assessment. Student is making a “good faith effort” to work with the teacher.
AW	Academic Warning - student has either missing or has achieved a less than 70% on a summative assessment. Student is NOT working with his/her teacher. Student is NOT making a “good faith effort” to correct the situation.
NC	No Credit – No Credit given for class.

GRADE POINT AVERAGE

The accumulative grade point average of a student is determined by assigning numbers to each semester grade the student has earned in grades 9 through 12. A=4.0, A-=4.00, B+=3.67, B=3.33 B-=3.00, C+=2.67 C=2.33, C-=2.00.

In addition, the following scale will be used to determine GPA for AP classes A= 5.0, A--=5.00, B+=4.67, B=4.33, B-=4.00, C+=3.67, C=3.33, C-= 3.00.

GRADE POINT AVERAGE, CONTINUED

The total points earned for all courses taken are then divided by the number of courses attempted. (Student Aide and Office Aide assignments are not figured in determining a student's grade point average).

NATIONAL HONOR SOCIETY

To be eligible for National Honor Society selection, students must, as of the second semester of their sophomore year:

1. Have demonstrated qualities of scholarship, leadership, character, and service.
2. Have a grade point average of 3.2 or better.

STANDARDIZED TESTING

The following are tests available and/or required for students to complete.

◆ **Kansas State Assessment Tests**

The Kansas State Department of Education requires students at selected grade levels to participate in competency testing in reading, mathematics, writing, science, and social studies.

◆ **PSAT/National Merit Scholarship Qualifying Test**

This multipurpose test, a shortened version of the SAT, includes five sections: two verbal, two math and one writing skills. The purpose of the test is to identify students in American high schools as recipients of various national scholarships. For juniors, the test is excellent for determining the student's college-level ability. The test scores, together with the high school academic record, can be helpful in making a realistic decision about post-secondary education and/or training. Sophomores may elect to take this test for experience.

◆ **ACT Assessment**

On five dates each academic year, the ACT American College Test Assessment is administered on a national basis to college-bound students throughout the U.S. The ACT Assessment consists of four sub-tests--English, Mathematics, Reading and Science Reasoning. An interest inventory completed by the student on the application form provides information to the student for pre-college planning. The data are used by institutions for academic counseling, admission advisement and research. The test is required by more than 2,000 colleges, universities, two-year colleges, scholarship agencies and athletic conferences. Applications are available from the counseling department. Registration must be completed by the published closing date, which is usually a month prior to the scheduled test date.

◆ **PLAN**

The PLAN is a shortened version of the ACT. It assesses students in the areas of English, math, science, and reading. It also provides valuable information to help students plan their high school coursework to be prepared for post-secondary work. In addition, there is a career interest section where students identify their interests and get information about an area of interest as well as suggestions for ways to improve their skills.

COURSE DESCRIPTIONS

The courses offered by Wamego High School are listed by department.

Certain courses might not be offered every year. If a course is listed as a year course, the student is expected to be enrolled in the course *both* semesters. For some classes, the student must have taken prerequisite courses to qualify to take an advanced course. For other courses, students must make application and be selected by try-outs or by screening.

CORE CLASSES

ENGLISH

LANGUAGE ARTS COMMUNICATIONS

<u>COURSE</u>	<u>PREREQUISITE</u>	<u>YEAR</u>	<u>CREDIT</u>
English I	None	9	1
English II	None	10	1
Accelerated English II	Sophomore Status, "B" average in English I or instructor permission	10	1
English III	None	11	1
AP Language and Composition	Junior Status, "B" average in English II or Acc. English II or instructor permission	11	1
English IV	Senior Status	12	1
AP English IV/Literature & Composition	Senior Status, "B" average in English I, II, and III. English III teacher permission.	12	1
Oral Communications	None	9, 10, 11, 12	.5
Non-Competitive Debate & Forensics	None	9, 10, 11, 12	.5
Novice Debate	Minimum "B" average in English	9, 10, 11, 12	.5
Advanced Debate	Novice Debate & Instructor Permission	10, 11, 12	.5
Forensics	None	9, 10, 11, 12	.5
Drama I	None	9, 10, 11, 12	.5
Drama II	None	9, 10, 11, 12	.5

ENGLISH I

Prerequisite: None
Grade Level: 9
Counts as 1 English credit
Required for all students

English I is a full-year required course integrating language skills, written composition and a survey of literature. The primary vocabulary study will center around Greek prefixes, suffixes, and roots.

**ONE OF THE FOLLOWING (*) MUST BE TAKEN TO COMPLETE
THE SECOND YEAR ENGLISH REQUIREMENT:**

***ENGLISH II**

Grade Level: 10

Counts as 1 English credit

English II is a year-long course required for graduation. It is a literature-based course that integrates writing, language skills, and technology. Each quarter a novel or full-length play will be studied along with related short stories, poems, films, and essays. The novels are based on the following thematic units: Abuse of Authority, Censorship, Tolerance, and Love & Mistaken Identities. Areas of writing include narrative, creative, descriptive, informative, persuasive, and technical. The primary vocabulary study will center around Greek roots, prefixes, and suffixes. Two book reports, one each semester, are also part of the curriculum.

***ACCELERATED ENGLISH II**

Grade Level: 10

Counts as 1 English credit

Accelerated English II is designed specifically for the student who intends to enroll in AP English Language and Composition his/her junior year. The course covers American literature, and the research paper is one of the major projects. Extensive reading and writing will be required in the course, as well as an introduction to many literary terms covered at the AP level. A focus will be on developing a writing style and practicing in-class essays. Students who are looking for further challenges in the area of language arts should take this course.

ONE OF THE FOLLOWING () MUST BE TAKEN TO COMPLETE THE THIRD YEAR ENGLISH REQUIREMENT:**

****ENGLISH III**

Grade Level: 11

Counts as 1 English credit

English III is a full-year required course integrating language skills, written composition, and American literature. Through a chronological approach, American literature is integrated with writing. The course will include the study of *The Crucible* as well as other novels by American authors. The primary vocabulary study will center around Latin prefixes, roots, and suffixes.

****AP LANGUAGE AND COMPOSITION**

Grade Level: 11

Counts as 1 English credit

AP English Language and Composition is a year-long course equivalent to a college composition course. Students complete reading from a variety of historical periods and disciplines, with a focus on non-fiction texts. Students will also extensively practice rhetorical analysis and write expository, analytical, and argumentative essays. Some summer reading and writing is required. Students are encouraged to take the AP Exam in May, and preparation for the exam is an integral part of the course. College and/or university credit may be awarded through successful completion of the exam.

ONE OF THE FOLLOWING (*) MUST BE TAKEN TO COMPLETE
THE FOURTH YEAR ENGLISH REQUIREMENT:**

***** ENGLISH IV**

Prerequisite: Senior Status
Grade Level: 12
Counts as 1 English credit
Required for all students

English IV is a year-long course required for graduation. The course integrates narrative, descriptive, expository and technical writing; discussion; and the chronological study of various works of British literature, including *Macbeth*, *Dracula*, and *Brave New World*. Book responses for novels read outside class are also required. Primary vocabulary will be a continuation of the study of Latin roots, prefixes, and suffixes.

***** AP ENGLISH IV/LITERATURE AND COMPOSITION**

Prerequisite: Senior Status and a B or above grade average for three preceding English courses and English III instructor recommendation
Grade Level: 12
Counts as 1 English credit

This is a college-level course that covers two semesters of college material in two high school semesters. Students will be expected to read extensively a variety of literature from various genres and time periods. Some summer reading is required. Emphasis will be placed on developing a strong writing style through timed writings and out-of-class essays. In addition, students will thoroughly study numerous literature terms. Students are encouraged to take the Advanced Placement exam in May, and preparation for the exam is an integral part of the course. College and /or university credit may be awarded through successful completion of the exam.

ORAL COMMUNICATIONS

Prerequisite: None
Grade level: 9 - 12
Counts as .5 Oral Communications credit
Required for all students

This course covers all aspects of oral communication. The student will be involved with public speaking, group discussion, listening skills, and interpersonal communication. This course emphasizes student performance and students will give at least three major speeches in addition to several practice speeches.

NON-COMPETITIVE DEBATE & FORENSICS

Prerequisite: None
Grade Level: 9 – 12
Counts as .5 Oral Communications credit
Elective

Non-Competitive Debate and Forensics is designed to help students gain an understanding of debate and forensics, while providing many opportunities to experience both activities. Students may choose to compete in debate or forensics, but it is not a course requirement. The class explores several styles of debate, as well as all 9 forensics events. Students will sharpen their speaking and acting skills through a variety of presentations and performances.

NOVICE DEBATE

Prerequisite: Minimum B average in English
Grade Level: 9-12
Counts as .5 Oral Communications credit
Elective

This is a first-year course for students interested in competitive debate. This course emphasizes research skills as well as developing solid speaking abilities. Student will compete in debate tournaments held throughout the fall. Tournaments are held on Saturdays. Students will be expected to run the home tournament as well as compete in at least 4 tournaments in the fall.

ADVANCED DEBATE

Prerequisite: Previous experience and instructor permission, minimum B average in English
Grade level: 10-12
Counts as .5 Oral Communications credit
Elective

Students continue to strengthen skills learned in novice debate and develop more complex persuasive skills. Advanced students will assist novices and provide “mini-lessons” on various aspects of debate. Tournaments are held on Saturdays. Student will be expected to run the home tournament as well as compete in at least 4 tournaments in the fall.

FORENSICS

Prerequisite: None
Grade level: 9-12
Counts as .5 Oral Communications credit
Elective

This course emphasizes competitive speech and drama. Students work on completing and performing speeches, scenes, or interpreting cuttings from plays or literature. All students will learn about and prepare each of the 9 events and understand the rules that govern them. A large part of this course is Saturday competition. Students must compete in at least 4 tournaments and run the home tournament.

DRAMA I

Prerequisite: None
Grade level: 9-12
Counts as .5 Oral Communications credit
Elective

This is a fine arts course that offers an overview of theater arts. Students will explore theater history, acting, production, as well as critique live performances. Students will have the opportunity to explore a variety of theatrical genres, as well as gain hands-on experience in many aspects of theater including design, construction, and costuming.

DRAMA II

Prerequisite: Drama I
Grade level: 9-12
Counts as .5 Oral Communications credit
Elective

This is a fine arts course that builds on skills gained in Drama I and offers an in-depth look at many aspects of theater arts. Students will analyze scripts for costuming, set-building, promotion, and all areas of production. The class will engage in performances, as well as critiquing live performances.

MATH

Note: A student will be continuously enrolled in a math class until a student earns a minimum of 3 math credits.

<u>COURSE</u>	<u>PREREQUISITE</u>	<u>YEAR</u>	<u>CREDIT</u>
Integrated Algebra	None	9, 10, 11, 12	1
Integrated Geometry	Integrated Algebra	9, 10, 11, 12	1
Advanced Math I	Integrated Geometry	9, 10, 11, 12	1
Advanced Math II	Advanced Math I	10, 11, 12	1
AP Calculus	Adv. Math II	11, 12	1

RELATED MATH COURSES

<u>COURSE</u>	<u>PREREQUISITE</u>	<u>YEAR</u>	<u>CREDIT</u>
Int. Algebra Lab	Concurrently enrolled in Integrated Algebra & Instructor Permission	9	1
Int. Geom. Lab	Concurrently enrolled in Integrated Geometry & Instructor Permission	10-11	1
Adv. Math I Lab	Concurrently enrolled in Adv. Math I & Instructor Permission	11-12	1

INTEGRATED ALGEBRA

Prerequisite: None

Grade level: 9—12

Counts as 1 Mathematics credit

Additional cost of the course:

3 Ring notebook (1½" - 2½")

3x5 spiral note cards

TI-83 graphing calculator is recommended but NOT REQUIRED

Required for all students

Integrated Algebra covers content from areas in algebra, geometry, statistics, and probability and lays the foundation for further study in those areas. Specific units include: patterns in data (tables, graphs, and statistics), patterns of change, linear models, patterns in space (involving shapes and transformations), exponential models, and simulation models. Students work cooperatively with other students as well as individually to conduct investigations, solve problems, analyze real-world data through graphical display and summary statistics, and connect mathematical ideas and applications. An important part of this curriculum is the regular use of a TI-83 graphing calculator.

INTEGRATED GEOMETRY

Prerequisite: Integrated Algebra

Grade level: 9—12

Additional cost of the course:

3-ring notebooks (1½" to 2½")

3x5 spiral note cards (or continue with the set from last year)
TI-83 graphing calculator is recommended but NOT REQUIRED
Counts as 1 Mathematics credit
Required for all students

Integrated Geometry continues to cover content from areas in algebra, geometry, statistics, and probability and lay the foundation for further study in those areas. Specific units include: matrix models, relationships among geometric shapes and their transformations, patterns of association (correlation between variables), power models (quadratics, square root and cube root relations, fractional powers and radical expressions), geometric form and its function (introduction to trigonometric functions, angular velocity and periodic change), patterns in chance (probability). Students work cooperatively with other students as well as individually to conduct investigations, solve problems, and analyze real-world problem situations and to connect mathematical ideas and applications. An important part of this curriculum is the regular use of a TI-83 graphing calculator.

ADVANCED MATH I

Prerequisite: Integrated Geometry
Grade level: 9—12
Counts as 1 Mathematics credit
Additional cost of the course:
3 Ring Notebook (1½”- 2½”) and Scientific Calculator
3x5 spiral note cards (or continue with the set from last year)
TI-83 graphing calculator is recommended but NOT REQUIRED

Required for all students

Advanced Math I covers content from areas in algebra, geometry, statistics and probability and lays the foundation for further study in those areas. Specific units include: Multi-variable models (topics include formulas, Law of Sines and Law of Cosines, systems of equations and inequalities); Modeling Public Opinion (topics include sampling, confidence intervals, and margin or error); Symbol Sense and Algebraic Reasoning (topics include domain and Range, use of polynomials, rational expressions, factoring, quadratic formula); Shapes and Geometric Reasoning (topics include proof, supplementary and vertical angles, angles formed from parallel lines cut by a transversal, and similarity and congruence); Patterns in Variation (topics include standard and normal distribution); and Families of Functions (topics include review of linear, polynomial, exponential, rational, and periodic functions and construction of rules for function tables, and graphs). Students work cooperatively with other students as well as individually to conduct investigations, solve problems, and analyze real-world problem situations and to connect mathematical ideas and applications. An important part of this curriculum is the regular use of a TI-83 graphing calculator.

ADVANCED MATH II

Prerequisite: Advanced Math I
Grade level: 10—12
Counts as 1 Mathematics credit
Additional cost of the course:
3 Ring Notebook (1½”- 2½”) and Scientific Calculator
3x5 spiral note cards (or continue with the set from last year)
TI-83 graphing calculator is strongly recommended. If a student cannot purchase their own calculator, they may rent one from the school library.

Advanced Math II continues to cover content from areas in algebra, geometry, statistics and probability and lays the foundation for further study in higher level mathematics. Specific units include: Rates of change (topics include instantaneous rates of change, accumulation at variable rates, and rates for familiar functions); Modeling Motion (topics include linear motion and simulating motion); Logarithmic Functions and data Models (topics include inverse of functions, logarithmic functions, and linearizing data);

Counting Models (topics include methods of counting and the principle of mathematical induction); Polynomial and Rational functions (topics include polynomial functions, factoring, and rational functions); Functions and Symbolic Reasoning (topics include reasoning with exponential, logarithmic, and trigonometric functions, solving trigonometric equations, and complex numbers); Space Geometry (topics include three-dimensional shapes and equations for surfaces). Students work cooperatively with other students as well as individually to conduct investigations, solve problems, and analyze real-world problem situation and to connect mathematical ideas and applications. An important part of this curriculum is the regular use of the TI-83 graphing calculator.

AP CALCULUS

Prerequisite: Adv. Math II
Grade level: 11, 12
Counts as 1 Mathematics credit
Elective

Students will explore how limits are defined and calculated, how derivatives are used to measure rates of change, and what graphs tell us about the behavior of functions. Students will also study integration and its applications for finding lengths, area, volume, and predicting future events such as population growth and cost of living.

INTEGRATED ALGEBRA LAB

Requirement: Concurrently enrolled in Integrated Algebra & Instructor Permission
Grade level: 9
Counts as 1 elective credit
Elective

Integrated Algebra Lab is a course for students needing additional time and more targeted instruction in their math class. Student will complete the assigned homework from algebra class, review the material that is currently being covered, practice for quizzes and tests, and preview material for upcoming classes. Student can also retake summative assessments during this time if necessary. The course is recommended for students needing additional support while learning math.

INTEGRATED GEOMETRY LAB

Requirement: Concurrently enrolled in Integrated Geometry & Instructor Permission
Grade level: 10-11
Counts as 1 elective credit
Elective

Integrated Geometry Lab is a course for students needing additional time and more targeted instruction in their math class. Student will complete the assigned homework from geometry class, review the material that is currently being covered, practice for quizzes and tests, and preview material for upcoming classes. Student can also retake summative assessments during this time if necessary. The course is recommended for students needing additional support while learning math.

ADVANCED MATH LAB

Requirement: Concurrently enrolled in Advanced Math I & Instructor Permission
Grade level: 11-12
Counts as 1 elective credit
Elective

Advanced Math I Lab is a course for students needing additional time and more targeted instruction in their

math class. Student will complete the assigned homework from advanced math I class, review the material that is currently being covered, practice for quizzes and tests, and preview material for upcoming classes. Student can also retake summative assessments during this time if necessary. The course is recommended for students needing additional support while learning math.

SCIENCE

COURSE	PREREQUISITE	YEAR	CREDIT
Biology	None	9, 10	1
Anatomy/Physiology	Biology, Chemistry	11, 12	1
Field Biology	Biology, Chemistry	11, 12	.5
Environmental Science	Biology, Chemistry	11, 12	.5
Zoology	Biology	10, 11, 12	.5
Botany	Biology	10, 11, 12	1
Physical/Environmental Geology	None	10, 11, 12	.5
Astronomy/Atmospheric Science	None	10, 11, 12	.5
Chemistry	Integrated Geometry	11, 12	1
Physics	Advanced Math I, Chemistry	12	1

BIOLOGY

Prerequisite: None

Grade level: 9,10, Required for all students.

Counts as 1 Science credit

Biology is a general lab course covering major areas of life science. Lab investigations will play a major role in this course. Students will be expected to demonstrate their knowledge of course content in a variety of ways. Some major areas of emphasis include, but are not limited to, the following:

- | | |
|----------------------------------|--------------------------------|
| -Scientific Process Skills | -Cell structure and function |
| -Cell processes | -Genetics |
| -Classification of living things | -Diversity of living organisms |
| -Comparative anatomy | -Zoology |
| -Botany | -Ecology |

ANATOMY AND PHYSIOLOGY

Prerequisite: a “C” or better in Biology AND Chemistry (or instructor permission)

Grade Level: 11 - 12

Recommended for students interested in further biology investigations & /or health fields

Required for Health Career Science Class.

Counts as 1 science credit

Elective

In this class students will gain a general introduction to the structure and function of the human body. Students will perform comparative dissection labs and use the microscope for more detailed study of minute structures. In addition students will explore new areas of biotechnology. Students interested in medical careers (nurse, doctor, physical therapist, dentist, optometrist, lab tech., x-ray tech. etc.) are given a basic background for their area of interest.

FIELD BIOLOGY

Prerequisite: a "C" or better in Biology AND Chemistry (or instructor permission)

Grade level: 11 – 12

Counts as .5 science credit (semester course)

Elective

This course is designed for the serious biology student to develop understanding of the concepts and principles of field work: data collection, specimen preservation, etc. Usually a minimum of two pages of journaling is required to document learning experiences for each trip to the field. Cooperative group work necessary for data collection. Appropriate clothing is required for the weekly field trips which are extensions of the classroom. Students are required to abide by the class field trip safety procedures.

ENVIRONMENTAL SCIENCE

Prerequisite: Biology

Grade level: 10 – 12

Counts as .5 science credit (semester course)

Elective

This course is designed to provide a better understanding of non-renewable resources, energy sources, recycling, water management, agriculture and land use, and their impact on ecology. Field trips are extensions of the classroom.

ZOOLOGY

Prerequisite: Biology

Grade level: 10 – 12

Counts as .5 science credit (semester course)

Elective

This course includes selected topics in animal biology such as taxonomy, animal physiology and ecology. Laboratory research skills such as dissection and advanced microscope techniques are developed.

BOTANY

Prerequisite: Biology

Grade level: 10 – 12

Counts as .5 science credit (semester course)

Elective

This course includes selected topics in plant biology such as taxonomy, plant physiology, genetics and ecology. Laboratory research skills such as advanced microscope techniques are developed

PHYSICAL AND ENVIRONMENTAL GEOLOGY

Prerequisite: None

Grade level: 10 - 12 Recommended for all students

Counts as .5 Science credit (semester course)

Elective

This course is designed to be a comprehensive study of the physical occurrences that shape our planet. Field trips are extensions of the classroom.

ASTRONOMY

Prerequisite: None
Grade level: 10- 12 Recommended for all students
Counts as .5 Science credit (semester course)
Elective

This course is designed to be a comprehensive study of the physical occurrences that shape our planet's atmosphere and our universe. Field trips are extensions of the classroom.

CHEMISTRY

Prerequisite: Concurrent Enrollment in or completion of Adv. Math I
Grade level: 10 – 12
Materials needed: Scientific calculator
Recommended for all students
Counts as 1 science credit
Elective

Chemistry is the study of matter, its composition and structure, and the changes it undergoes. The student who successfully completes this course will have a good foundation for the often-required college chemistry course, as well as a better understanding of what is happening in the world around them. Solid math skills are necessary for success in chemistry.

PHYSICS

Prerequisites: A “B” or higher in Adv. Math I, concurrent enrollment in or completion of Adv. Math II, and a “B” or higher in Chemistry
Grade level; 11(with instructor permission), 12
Recommended for all students
Additional materials required: Scientific calculator
Counts as 1 science credit
Elective

Physics deals with the laws of matter and energy. These laws are used to explain the world around us. We study physics in theory, practicality (laboratory) and numerically. Strong math skills, **including trigonometry**, are necessary to complete this course successfully. It is recommended that chemistry be taken first. Considerable homework is a function of this course. The student who successfully completes this course will have a good foundation for college physics courses, as well as a better understanding of what is happening in the world around them.

SOCIAL STUDIES

<u>COURSE</u>	<u>PREREQUISITE</u>	<u>YEAR</u>	<u>CREDIT</u>
World Geography	None	9	.5
World History	None	9, 10, 11, 12	.5 - 1
American History	None	11	1
AP United States History (APUSH)	Cumulative 3.0 GPA OR instructor permission. MUST pass Semester 1 to continue in Semester 2.	11, 12	1
Psychology	None	9, 10, 11, 12	.5

AP Psychology	None	10, 11, 12	1
Sociology	None	10, 11, 12	1
Economics	None	10, 11, 12	.5
American Government	American History	12	.5
AP American Government	American History or AP American History, Cumulative 3.0 GPA OR instructor permission	12	1
AP European History	Instructor permission	10, 11, 12	1

WORLD GEOGRAPHY

Prerequisite: None
 Grade level: 9, 10
 Counts as .5 Social Studies Credit
 Required for all students

This course covers world geography in a regional format. Each region is studied using the five themes of geography. The course includes the physical geography of each region as well as major religions and cultural traits.

WORLD HISTORY

Prerequisite: None
 Grade level: 9
 Counts as .5 Social Studies credit each semester
 Elective

An overview of the history of the world to modern times. Western civilization will be stressed. Recent history and current affairs will be incorporated weekly. Semester 1 - beginning of man to 1500 AD; Semester 2 - 1500 AD-present.

AMERICAN HISTORY

Prerequisite: None
 Grade level: 11
 Counts as 1 Social Studies credit
 Required for all students

US history survey, focus on 20th century, taught with a variety of skills and resources.

ADVANCED PLACEMENT UNITED STATES HISTORY (APUSH)

Prerequisite: Cumulative 3.0 GPA (or permission of instructor). ***Must pass 1st semester to continue in 2nd semester.***
 Grade Level: 11
 Counts as 1 Social Studies credit
 Elective

College level class covers two college semesters in two high school semesters. Students need strong reading, writing and analytic skills. Second semester enrollment is based upon successful completion of first semester course requirements. One objective of this course is for students to pass the national Advanced Placement United States History examination, by which students may earn up to 6 hours college credit. Students are strongly encouraged, but are not required, to purchase texts.

PSYCHOLOGY

Prerequisite: None
Grade level: 9 – 12
Counts as .5 Social Studies credit
Elective

This course will enable the student to know and understand him/herself better. Students will master concepts and theories in psychology and use these in everyday vocabularies. Subject areas include the following: understanding personality, abnormal behavior, motivations and emotions, human development, principles of learning and biological influences of behavior. Students will develop critical thinking skills and build on their writing, reading and discussion skills. An emphasis will be on the application of psychological concepts to students' own lives.

ADVANCED PLACEMENT PSYCHOLOGY

Prerequisite: None
Grade Level: 10 – 12
Counts as 1 Social Studies credit
Elective

The goal of this course is to increase the understanding of psychology, its methods, theory and research, with the objective that each student passes the Advanced Placement Examination in the spring. The course will explore the psychological facts, principles and phenomena associated with each of the major sub fields of psychology. This course is taught at the college level and student study habits and participation should reflect this fact. Emphasis will be placed on critical thinking and evaluation of materials. Students may earn 3 hours of college credit for successful Advanced Placement Examination scores.

SOCIOLOGY

Prerequisite: None
Grade level: 10-12
Counts as .5 Social Studies credit
Elective

This course will provide the student with insight into the various social pressures and structures from which he/she cannot escape. Students will better understand and cope with these realities of our society. The key insight of sociology is that all human behavior is social in some respect; in other words, it is influenced by other people. This will be the emphasis throughout this course. Study areas include the following: the five social institutions, social class, adolescence, crime and poverty.

ECONOMICS

Prerequisite: None
Grade level: 10-12
Counts as .5 social Studies credit
Elective

Economics will include a study of the function of the world economy as well as a detailed look at the U.S. economy. Supply, demand, the stock market, marginal analysis and the function of currency on the world market will all be studied.

AMERICAN GOVERNMENT

Prerequisite: U.S. History
Grade level: 12
Counts as .5 Social Studies credit
Required

American Government will begin with a detailed look at the U.S. Constitution. An in-depth look at the

three branches of government will then spring from this knowledge base. The electoral process, taxation process and the structure of federal bureaucracy will also be detailed.

ADVANCED PLACEMENT UNITED STATES GOVERNMENT AND POLITICS (USGAP)

Prerequisite: American History or AP American History *Must pass 1st semester to continue in 2nd semester.*

Grade Level: 12

Counts as 1 Social Studies credit

Elective

College level class which covers one college semester in two high school semesters. Student needs strong reading, writing and analytic skills. Second semester enrollment is based upon successful completion of first semester course requirements. One objective of the course is for students to pass the national Advanced Placement examination, by which students may earn up to 6 hours college credit. This course may be substituted for the required 1 semester American Government course.

ADVANCED PLACEMENT EUROPEAN HISTORY

Prerequisite: Recommendation of a teacher & Instructor permission

Grade Level: 10 – 12

Counts as 1 social studies credit

Elective

Advanced Placement (AP) European History is a year survey of modern European history from approximately 1450 to the present. In addition to providing a basic narrative of political and cultural events in modern Europe, AP European history will also focus on the development of skills used to analyze historical evidence. One objective of this course is for students to pass the national Advanced Placement European history test, by which they may earn 3 hours of college credit.

CAREER & TECHNICAL EDUCATION (CTE)

Career and technical education is about helping students, workers and lifelong learners of all ages fulfill their working potential. First and foremost it's about education that provides students with:

- Academic subject matter taught with relevance to the real world.
- Employability skills, from job-related skills to workplace ethics.
- Education pathways that help students explore interests and careers in the process of progressing through school.

ALL LAB/COURSE FEES **MUST** BE PAID, IN FULL, BY THE END OF THE FIRST WEEK OF CLASS OR THE STUDENT WILL BE REQUIRED TO ENROLL IN ANOTHER CLASS THAT DOES NOT REQUIRE A FEE.

AGRICULTURE EDUCATION

Agriculture Education course sequence chart located on Page # 37.

<u>COURSE</u>	<u>PREREQUISITE</u>	<u>YEAR</u>	<u>CREDIT</u>
Agriscience	None	9, 10, 11, 12	1
Animal Science	Agriscience	10, 11, 12	1
Horticulture	Agriscience	10, 11, 12	1
Nursery & Landscape	Agriscience, Horticulture ,	11, 12	1
Agribusiness	Agriscience, 2 nd year Ag Class	11, 12	1
Ag Welding	Agriscience	10, 11, 12	1
Ag Fabrication	Ag Welding	11, 12	1
Ag Structures	Ag Fabrication	12	1
Ag Communications	Agriscience & Soph. level Ag Classes	11,12	1
Food Science	None	10, 11, 12	1

AGRISCIENCE

Prerequisite: None

Grade level: 9-12

Recommended for students interested in advanced HS agriculture courses

Additional cost of the course: \$10.00

Counts as 1 Agriculture Education credit

Elective

This class is an introductory class to many occupational fields in agriculture. The class topics include: agricultural careers, leadership, FFA, plant science, animal science, welding, public speaking, entomology, etc. All competency areas are introductory levels. This class is very activity based involving all of the areas mentioned above.

ANIMAL SCIENCE

Preferred Prerequisite: Agriscience

Grade level: 10-12

Recommended for students interested in pre-veterinary medicine, Animal Science industry and students interested in animal production.

Additional cost of the course: \$10.00

Counts as 1 Agriculture Education credit

Elective

This class will cover animal science competencies including: animal nutrition, animal health, animal reproduction, animal care and maintenance, livestock selection, small animal care, genetics, anatomy, livestock judging, poultry judging, hands-on skills with livestock and livestock marketing.

HORTICULTURE

Preferred Prerequisite: Agriscience

Grade Level: 10-12

Additional Cost: \$20.00/year

Counts as 1 Agricultural Education Credit

Elective

The horticulture class is an advanced course dealing with plants and plant production. The competencies include: plant propagation, landscaping, soil mediums and fertilizers, pruning and care of trees and shrubs, landscape design, plant stimulators and greenhouse operations. Additional activities: Working with a greenhouse facility to raise landscape plant materials.

NURSERY AND LANDSCAPE

Prerequisite: Agriscience, Horticulture
Grade Level: 11-12
Additional Cost: \$20.00/year
Counts as 1 Agricultural Education Credit
Elective

This class follows with instruction in horticulture sciences, emphasis placed upon nursery production and the landscape industry. Students will spend time between the classroom and greenhouses, but a majority of the spring semester will be spent in the greenhouse. Some landscape projects will be under taken as a part of the spring work as well creating/aiding with work for the Horticulture I class. This class is scheduled during the Horticulture I block. Written Permission of Instructor is required to enroll.

AGRIBUSINESS

Prerequisite: Agriscience & Soph. Level Ag Class
Grade level: 11, 12
Recommended for students interested in management careers in agri-business and agriculture.
Counts as 1 Agricultural Education credit
Elective

Competencies covered in this course include: career exploration and job-seeking skills, advertising and promotion, human relations, leadership skills, computerized record keeping, marketing, taxation and other business management principles.

AG WELDING

Preferred Prerequisite: Agriscience
Grade level: 10-12
Additional cost of the course: \$20.00 + project cost. Tape measure, gloves, safety, glasses, pliers needed.
Counts as 1 Agricultural Education credit
Elective

The first half (1st semester) of this one year course is devoted to the basic fundamentals of welding. The student will learn a number of various types of welding processes and applications and will demonstrate this by constructing basic weld joints. This will be accomplished in conjunction with demonstrations, guest presenters and possible field trips. During the second semester, students will put their knowledge and skills toward construction of projects with instructor approval.

AG FABRICATION

Prerequisite: Ag Welding
Grade level: 11, 12
Recommended for students interested in the engineering field or students wishing to enter the workforce at entry-level positions.
Shop User Fee: \$20.00
Additional cost of the course: Project construction cost.
Students will be required to purchase a tape measure and pliers.
Counts as 1 Agricultural Education credit
Elective

Students must provide their own construction projects to work on during the duration of the class. This class will be an advanced course for the welding technology curriculum. Students will receive instruction in shop safety, project planning, practical welding, the construction or repair of selected metal projects.

AG STRUCTURES

Prerequisite: Ag Fabrication

Grade level: 12

Recommended for students interested in the engineering field or students wishing to enter the workforce at entry-level positions.

Shop User Fee: \$20.00

Additional cost of the course: Project construction cost.

Students will be required to purchase a tape measure and pliers.

Counts as 1 Agricultural Education credit

Elective

This course is offered to provide students knowledge and skills in the area of metal fabrication. This class is very similar to Ag Fabrication in that students will spend a majority of the year in project construction except that students will construct projects on a production level. Time will also be spent on marketing metal projects for sale. This class is scheduled concurrently with Ag Fabrication.

AG COMMUNICATIONS

Prerequisite: Agriscience and Soph. Level Ag Class

Grade level: 12 or FFA Officers

Counts as 1 Agricultural Education credit

Elective

The purpose of this course is to assist students in developing their knowledge, attitudes and skills regarding leadership development in an Ag setting. The goal is to encourage students to be knowledgeable, caring decision makers. Students will find opportunities to further develop their organizational skills by interacting not only with other class members, but also with other organizations, groups and activities. Students are in charge of organizational and school activities, are responsible for successfully organizing, conducting and evaluating the activities. This class can be taken during any block except Welding.

FOOD SCIENCE

Prerequisite: None

Grade levels: 10-12

Counts as .5 FACS credit or AG credit

Additional cost for the class: A \$10.00 fee will be assessed for food expenses.

Elective

In this course students use the scientific method to study the biological and chemical basis of nutrition and food preparation, preservation, and processing. It is taught in the FACS department. Students develop laboratory, writing, and reasoning skills through measuring, recording and graphing data, and writing laboratory reports. Students learn the practical application of science and expand their knowledge of scientific principles. Students will gain some insight into the many career possibilities in the food science field.

BUSINESS AND COMPUTERS

Business and Computers course sequence chart located on Page # 39.

<u>COURSE</u>	<u>PREREQUISITE</u>	<u>YEAR</u>	<u>CREDIT</u>
Computer Applications IA	None	9, 10, 11,12	.5
Computer Applications IB	Computer Applications IA	9, 10, 11,12	.5
Personal Finance	None	9, 10, 11,12	.5
Visual BASIC Programming	Computer Applications IA & IB with a "B-" average. Integrated Algebra or its equivalent	10, 11, 12	.5
Accounting I	None	10, 11, 12	1

College Accounting	Accounting I with "B" average	11, 12	1
Personal Law IA	None	10, 11, 12	.5
Personal Law IB	None	10, 11, 12	.5
Advanced Computer Applications & Certification (ACAC)	Computer Applications IA & IB and a "B" Average	11, 12	1
Entrepreneurship	Computer Applications IA	11, 12	1
Web Page & Multi-Media Design	Computer Applications IA & IB	11, 12	.5
Work Technology (OJT)	2 business or computer credits	12	1

COMPUTER APPLICATIONS 1A

Prerequisite: Middle School Keyboarding

Grade level: 9-12

Counts as .5 Computer Studies credit (Semester course)

Satisfies Wamego High School computer graduation requirement.

This course is a prerequisite for all other computer classes. It explores the topics of computers in the workplace and how they affect our everyday lives at home and in career fields. Students will receive instruction in computer concepts, operating systems, Windows, Word, Excel, and DeskTop Publishing as well as the Internet. Digital scanners and cameras will be utilized. This course helps meet the Board of Regents College entrance requirements.

COMPUTER APPLICATIONS 1B

Prerequisite: Computer Applications 1A

Grade level: 9-12

Counts as .5 Computer Studies credit (Semester course)

Elective

This course is a prerequisite for all advanced computer classes. Students will receive instruction in Access, PowerPoint, e-mail, multi-media concepts, ethics, and security. The digital scanner and camera will be used. This course helps meet the Board of Regents college entrance requirements.

PERSONAL FINANCE

Prerequisite: None

Grade level: 9-12

Counts as .5 Business credit (Semester course)

Elective

Learn the skills and knowledge necessary to conduct your personal business affairs. You will develop life skills in: banking, checking accounts, savings accounts, investments, budgeting money, insurance, using credit, taxes, advertising, consumer choices, and shopping wisely. Computer software is used to emphasize unit concepts.

VISUAL BASIC PROGRAMMING

Prerequisite: Computer Applications 1A and 1B with a B- or better average. Integrated Algebra or its equivalent.

Grade level: 10-12

Counts as .5 Computer Studies credit (Semester course)

Elective

Recommended for students planning careers in computers such as programmers, technicians, or computer operators using application programs. Also recommended for students planning to major in engineering, business, or other fields which require a programming class. This course is designed to introduce students to programming using Visual BASIC. Students explore career opportunities related to programming, learn planning and problem solving skills, and develop an understanding of Visual BASIC programming language and terminology.

ACCOUNTING I

Prerequisite: None

Grade level: 10-12

Counts as 1 Business credit (Full-year course)

Elective

Recommended as a course for students (1) planning to major in business or a profession such as medicine, pharmacy, etc., in college, (2) planning to take business and computer technology at a vocational technical college, (3) planning to go to work in an office after graduation or (4) planning to be an owner of a business in the future. Learn accounting, the language of business, and you will always have an extra skill for employment. Accounting I covers the principles and procedures necessary for entry-level employment in the accounting field and for college and vocational technical courses. This course presents the entire accounting cycle from recording transactions in double-entry methods to preparing financial statements for a service business and merchandising business. Computerized and spreadsheet software are used with the textbook and simulations.

COLLEGE ACCOUNTING

Prerequisite: Accounting I (B average)

Grade level: 11-12

Counts as 1 Business credit (Full-year course)

Elective

Recommended for students who plan to major in accounting, finance, marketing or other business-related field in college or vocational college. Also recommended for students planning to do accounting work in offices after graduation. College Accounting uses an integrated approach to teach accounting. Students first learn how businesses plan for and evaluate their operating, financing and investing decisions and then how accounting systems gather and provide data to internal and external decision makers. This year-long course covers all the learning objectives of a traditional college level financial accounting course, plus those from a managerial accounting course. Topics include: an introduction to accounting; accounting information systems; time value of money; accounting for merchandising firms; sales and receivables; fixed assets and debt and equity. After completing the course, students will have the opportunity to pass a qualifying exam whereby they can receive credit and a grade for the first accounting course when they enroll at Kansas State University. These same students will also be allowed to start the accounting curriculum as freshmen at KSU. Kansas State University is currently encouraging other colleges, universities and community colleges in the state to adopt this policy.

PERSONAL LAW 1A

Prerequisite: None

Grade level: 10-12

Counts as .5 Business elective (Semester course)

Elective

Recommended for students who want to know how and why laws affect their personal lives. Students learn about concepts and rules used in the business world. The types of laws studied are: constitutional law, ethics, the court system, criminal law, and torts (civil law).

PERSONAL LAW 1B

Prerequisite: None

Grade level: 10-12

Counts as .5 Business elective (Semester course)

Elective

Recommended for students who want to know how and why laws affect their personal lives. Students learn about concepts and rules used in the business world. The types of laws studied are: contract law, employment law, family law, consumer law, and landlord and tenant law.

ENTREPRENEURSHIP

Prerequisite: Computer Applications 1A
Grade level: 11-12
Counts as 1 Business elective (Full year course)
Elective

This is an Advanced Business class that will be project oriented and activity driven. Students will prepare business plans, entrepreneurship projects, American enterprise projects, and become familiar with business management and marketing concepts. Projects will be completed using the latest word processing, spreadsheet, database, and presentation software as well as the Internet. The digital camera, scanner, and other technology will also be used.

ADVANCED COMPUTER APPLICATIONS AND CERTIFICATION (ACAC)

Prerequisite: Computer Applications 1A, Computer Applications 1B **AND** B Average
Grade level: 11-12
Counts as 1 Computer studies elective (Full year course)
Elective

This course will cover the Microsoft Certified Application Specialist program. When students complete the course they will be competent to take the professional certification tests in Microsoft Office 2007 (Word, Excel, Access or PowerPoint). MCA Specialists are part of a global community of distinguished achievers. The Microsoft certification credential tells the world that you have demonstrated proficiency in the newest standards of the world's foremost desktop computing applications. Microsoft certifications (which are based on globally recognized standards) demonstrate computing skills and help advance career prospects in a competitive job market. Many employers in this area are looking for students with Microsoft Certified Application Specialist certifications."

WEB PAGE AND MULTI-MEDIA DESIGN

Prerequisite: Computer Applications 1A, Computer Applications 1B
Grade level: 10-12
Counts as .5 Computer studies elective (Semester course)
Elective

Students will learn to integrate text, audio, video, and animation in developing Web pages. The following concepts will be covered: research and idea generation; linking; text analysis and writing composition; HTML; web-page authoring software; maintenance and continuous improvements to web pages; and web page ethics, copyrights, and patents.

WORK TECHNOLOGY (On-the-Job Training)

Prerequisite: Two business/computer credits taken previously.
Grade level: 12
Counts as 1 Business elective (Full year course)
Elective

Work Technology is the capstone of the business/computer department's curriculum. Students receive actual on-the-job training. They will be doing live work for businesses and employers. The instructor will act as a "manager" by guiding the "employee" in daily activities. Students will go to the workplace and do "non-paid, volunteer" office/computer work for area businesses. Students also become Business Department Completers. Skills used are: computer/keyboarding, word processing, database, spreadsheet, telephone, receptionist, accounting, proofreading, filing, electronic calculator, copy machine, interpersonal, decision-making, mass mailing, and data entry.

COMMUNICATIONS TECHNOLOGY

Communications Technology course sequence chart located on Page #39.

<u>COURSE</u>	<u>PREREQUISITE</u>	<u>YEAR</u>	<u>CREDIT</u>
Photography	None	9, 10, 11, 12	.5
Advanced Photography	Photography and minimum "B" average	10, 11, 12	.5
Graphic Arts	Beginning Drawing and Painting, Word Processing AND Computer Applications 1A with minimum "B": average	11, 12	1
Desktop Publishing – Newspaper	Keyboarding, Instructor permission/Application, English with minimum "B" average	10, 11, 12	1
Desktop Publishing – Advanced Newspaper	Instructor permission/Application, DTP/Newspaper with minimum "B" average	11, 12	1
Desktop Publishing – Yearbook	Instructor permission/Application, English with minimum "B" average	10, 11, 12	1
Desktop Publishing – Advanced Yearbook	Instructor permission/Application, Yearbook with minimum "B" average	11, 12	1
Broadcasting	Oral Comm. Credit & Teacher Approval	10, 11, 12	1
Advanced Broadcasting	Oral Comm. & Broadcasting, Instructor Permission/Application,	11, 12	1

PHOTOGRAPHY

Prerequisite: None

Grade level: 9-12

Additional cost of the course: \$82 + project costs (students must provide a 35mm SLR Manual camera - Cannot use a digital camera.)

Counts as .5 Fine Art credit

Elective

Recommended for yearbook and journalism. Beginning photography is a one-semester class designed as an introduction to the manual camera and black and white photography. Students will learn sound darkroom habits as well as the creative techniques used by artistic photographers.

ADVANCED PHOTOGRAPHY

Prerequisite: Photography with a B average or better

Grade level: 10-12

Additional cost of the course: \$82 + project cost (students must provide a 35mm SLR Manual camera)

Counts as .5 Fine Art credit

Elective

Recommended for yearbook and journalism. Building off of the basics learned in beginning photography, students will enhance their skills in the darkroom as well as their decisions with composition. Students will also learn advanced techniques that will enhance photographic creativity.

GRAPHIC ARTS

Prerequisite: Beg. Drawing & Painting (B average or higher); Word Processing I (B average or higher); Computer Applications (B average or higher); * Adv. Drawing Painting *—highly recommended.

Grade level: 11-12

Additional Costs: \$20/semester + project costs.

Counts as 1 Fine Art credit.

Elective

Graphic Arts is a 1 year course, built on the elements and principles of design. Students will expand their knowledge of these elements and principles through individual projects on the computer. Students will receive training in CorelDRAW, Corel PhotoPaint, & PhotoShop. They will use their creativity in areas of design, printmaking, and business

DESKTOP PUBLISHING/NEWSPAPER

Prerequisite: Instructor permission/ B average or better in English

Grade level: 10-12

Recommended for students interested in a career in journalism.

Counts as 1 Elective credit

This is a yearlong class that focuses on the production of the WHS monthly newspaper, *The WaKaller*. It also addresses the history of journalism, press law and ethics, gathering information, writing (news, features, sports, and opinions), digital photography, design and layout using desktop publishing software, and marketing. Students must receive a 'B' grade or higher to continue the second semester of this class.

DESKTOP PUBLISHING/YEARBOOK

Prerequisite: Instructor permission

Grade level: 10-12

Counts as 1 Elective credit

Yearbook is a year-long desktop publishing elective course that produces a complete record of the school year. The class includes writing, design, photography, computer use, time management, and group dynamics. Students will use a scanner, digital camera, PhotoShop, and desktop publishing software. In addition, business skills will be learned through ad sales and budgeting for the yearbook.

ADVANCED DESKTOP PUBLISHING/YEARBOOK

Prerequisite: Instructor permission

Grade level: 11-12

Counts as 1 Elective credit

Advanced Yearbook is a year-long desktop publishing elective course that produces a complete record of the school year. Students in Advanced Yearbook take on leadership roles with regard to writing, design, photography, computer use, time management, and group dynamics. Students will continue and advance their use with a scanner, digital camera, PhotoShop, and desktop publishing software. In addition, business skills will be practiced through ad sales and budgeting for the yearbook.

BROADCASTING

Prerequisite: Oral Comm. Credit & Instructor Permission

Grade level: 10, 11, 12

Counts as 1 Elective credit

This class focuses on the basics of television and video production. Students will learn basic camera techniques, script writing, video editing and production. The major focus of the class is a weekly news broadcast that is aired community wide.

ADVANCED BROADCASTING

Prerequisite: Instructor Permission, Oral Comm. & Broadcasting.

Grade level: 10, 11, 12

Counts as 1 Elective credit

This is an advanced class that meets concurrently with Broadcasting. This class focuses on sharpening and enhancing. Videography and production skills. Students will take the producer role in newscast production, sell and direct video commercials, and design video production projects.

CONSTRUCTION

Construction course sequence chart located on Page # 40.

<u>COURSE</u>	<u>PREREQUISITE</u>	<u>YEAR</u>	<u>CREDIT</u>
Technology Exploration	None	9, 10, 11, 12	.5
Woods I	None/RECOMMENDED: Technology Exploration	9, 10, 11, 12	1
Woods II	Woods I	10, 11, 12	1
Construction Exploration	APPLICATION REQUIRED: Technology Exploration, Woods, <i>OR</i> Technology, Instructor <i>AND</i> Principal Permission	11, 12	1

TECHNOLOGY EXPLORATION

Prerequisite: None

Grade level: 9 - 12

Cost of the Course: \$10.00

Additional cost of the course: Cost of project materials, safety glasses provided by the student.

Counts as .5 Technology credit (Available in the spring semester only)

Elective

This course introduces participants to basic areas of technology. They are:

Materials and Processes – Study of commonly used manufacturing materials. Material applications, advantages, disadvantages, and limitations will be explored. Students will form these materials using hand and power tools. Safety in home and industry will be covered.

Drafting and Graphics – Study of drafting and construction fundamentals using orthographic, isometric, and oblique views. Measurement, measuring techniques, and industry tools will be covered. Student will be introduced to Computer Aided Design (CAD).

Consumer Maintenance – If time permits, basic home ownership, maintenance, and repair will be examined.

WOODS I

Prerequisite: None Recommended: Technology Exploration

Grade level: 9 - 12

Cost of the course: \$10.00

Additional course expenses: Safety glasses must be provided by the student. Cost of project materials is the student's responsibility.

Counts as 1.0 Technology credit

Elective

A comprehensive course designed to instruct students in the basic knowledge and skills required for cabinet making and furniture design.

WOODS II

Prerequisite: Woods I

Grade level: 10 - 12

Cost of the Course: \$10.00

Additional course expenses: Safety glasses must be provided by the student. Cost of project materials is the student's responsibility.

Counts as 1.0 Technology credit

Elective

This course is designed to continue woodworking fundamentals at a higher level and degree of workmanship in the construction of home furnishings. It is an advanced level application course designed to provide students with experience in constructing cases, cabinets, counters, furniture and interior woodwork.

CONSTRUCTION EXPLORATION

Prerequisite: Application Required with instructor and principal permission.

Preferred: Technology Exploration, Woods I, Technology

Grade level: 11, 12

Cost of Course: \$20.00

Additional course expenses: Safety glasses and appropriate worksite attire (jeans and work boots) must be provided by the student.

Counts as 1.0 Technology credit

Elective

This construction course uses "hands-on" techniques to introduce students to the following skill areas: site preparation, carpentry, plumbing, mechanical, electrical, drywall, glazier, cabinetry, masonry, concrete finishing, heavy equipment and demolition. Safety, tools and related jobs will be covered in each unit. This class is limited to 10 students. To be eligible for this class, students must apply in the spring. Local contractors, who are experts in each field, help teach the class.

DESIGN AND PRE-CONSTRUCTION

Design and Pre-Construction course sequence chart located on Page # 48

<u>COURSE</u>	<u>PREREQUISITE</u>	<u>YEAR</u>	<u>CREDIT</u>
Technology Exploration	None	9, 10, 11, 12	.5
Drafting/CAD	None/RECOMMENDED: Technology Exploration	9, 10, 11, 12	1
Architectural Drafting	Drafting/CAD	10, 11, 12	.5
Construction Exploration	APPLICATION REQUIRED Preferred: Technology Exploration, Woods, Instructor AND Principal Permission	11, 12	1
Woods I	None/RECOMMENDED: Technology Exploration	10, 11, 12	1

TECHNOLOGY EXPLORATION

For Course Description, see Construction, Page 28

DRAFTING/CAD

Prerequisite: None. Technology Exploration Recommended:
Grade level: 9 -- 12
Cost of the course: \$10.00
Counts as 1.0 Technology credit
Elective

A comprehensive course designed to instruct students in the areas of line construction, orthographic projection, isometric projection, nuts and bolts, sectioning, dimensioning and working drawings. The ten CAD systems will be demonstrated and used on a rotating basis. Students are required to develop and present projects using the decision-making process of identifying client concerns, goal setting, planning strategies, and follow-through.

ARCHITECTURAL DRAFTING

Prerequisite: Drafting/CAD
Grade level: 10 – 12
Cost of the course: \$5.00
Counts as .5 Technology credit (Available in the fall semester only)
Elective

A comprehensive course designed to instruct students in the basic skills of architectural design with emphasis on residential and light commercial applications. Each student will be required to draw a set of house plans.

WOODS I

For Course Description, see Construction, Page 28

CONSTRUCTION EXPLORATION

For Course Description, see Construction, Page 28.

FAMILY AND CONSUMER SCIENCE (FACS)

FACS: EARLY CHILDHOOD EDUCATION

FACS/Child Care/Guidance Management course sequence chart located on Page # 44.

<u>COURSE</u>	<u>PREREQUISITE</u>	<u>YEAR</u>	<u>CREDIT</u>
Career and Life Planning	None	9, 10,11,12	.5
Orientation to Early Childhood Education	None	9,10,11,12	1
Human Growth and Development	None	9,10,11,12	.5
Foundations to Early Childhood Education	Orientation to Early Childhood Education	10,11,12	1
Functions to Early Childhood Education	Foundations to Early Childhood Education	11,12	1

CAREER AND LIFE PLANNING

Prerequisite: None
Grade level: 9-12
Counts as .5 FACS credit
Elective

In the Career and Life Planning course students develop skills and strategies which are helpful to becoming more focused and productive individuals. The course typically emphasizes goal setting, decision making, time management, energy and stress management and identification of alternatives

choices and coping strategies. Students may also explore various career and lifestyle choices. Career portfolios will also be developed.

ORIENTATION TO EARLY CHILDHOOD EDUCATION

Prerequisite: None

Grade level: 9-12 or instructor approval

Counts as 1 FACS credit

Elective

This course is recommended for students interested in Early Childhood Education and Human Services. In this course, students will study the growth and development of the preschool child ages three to five. Students will learn how to use positive guidance techniques as well as how to design and implement lesson plans for children to develop physically, socially, emotionally, intellectually, and morally. Students will have the opportunity to work with preschool children in the Little Raider Preschool laboratory. Students acquire parenting skills as well as job-related skills related to working with preschoolers.

HUMAN GROWTH AND DEVELOPMENT

Prerequisite: None

Grade level: 9-12

Counts as .5 FACS credit

Elective

In the Human and Development course, students learn about the physical, intellectual, emotional and social growth and development of infants, children, adolescence young adults and adults and their development across the life span.

FOUNDATIONS TO EARLY CHILDHOOD EDUCATION

Prerequisite: Orientation to Early Childhood Education

Grade level: 10-12 or instructor approval.

Additional cost of course: \$5.00 for American Red Cross Certification

Counts as 1 FACS credit

Elective

This course is recommended for students interested in Early Childhood Education and Human Services. Students will continue their study of the growth and development of the preschool child ages three to five. Students continue their study of lesson planning with emphasis on pre-reading and writing skills. The Little Raider Preschool laboratory will provide leadership experience in planning and implementing activities and mini- lessons for the children. Students will become certified in American Red Cross and CPR skills.

FUNCTIONS TO EARLY CHILDHOOD EDUCATION

Prerequisite: Foundations to Early Childhood Education

Grade level: 11 or 12 or instructor permission

Counts as 1 credit

Elective

This is the final course in the sequence for students interested in Early Childhood Education and Human Services. Students will work off-campus at a predetermined work site in the community. Emphasis in this course will be placed on applying knowledge and skills in the workplace setting. Students will be required to complete a lesson plan and portfolio notebook for CDA certification readiness. Wamego High School graduates who complete the four course sequence in the Early Childhood Education and Human Services with a "B" grade or better are eligible to articulate with Highland Community College or Cloud County Community College and the Kansas Work Force Apprenticeship Program.

FACS: CULINARY ARTS AND HOSPITALITY

FACS/Culinary Arts and Hospitality course sequence chart located on Page # 50.

<u>COURSE</u>	<u>PREREQUISITE</u>	<u>YEAR</u>	<u>CREDIT</u>
Nutrition and Wellness	None	9, 10, 11, 12	.5
Culinary Arts I	Foods, Nutrition, and Wellness	9, 10, 11, 12	.5
Culinary Arts II	Foods, Nutrition, and Wellness AND Culinary Arts I	10, 11, 12	.5
Foods OJT (On the Job Training)	Foods, Nutrition, and Wellness Culinary Arts I, Culinary Arts II, AND Food Science	11, 12	.5

NUTRITION AND WELLNESS

Prerequisite: None
 Grade level: 9-12
 Counts as 1 FACS credit
 Elective

Additional cost for the class: A \$10.00 fee will be assessed for food expenses. This course includes a study of nutrition, food preparation, food safety, home management, and interpersonal relationships. The students will learn how to measure food correctly, use large and small kitchen equipment, and prepare a variety of foods. A complete meal will be prepared during the semester. Students will spend much of the course learning about personal wellness.

CULINARY ARTS I

Prerequisite: Foods, Nutrition & Wellness
 Grade level: 9-12
 Counts as .5 FACS credit
 Additional cost for the class: A \$15.00 fee will be assessed for food expenses.
 Elective

Culinary Arts I is a semester course designed to help high school student take their first real steps toward promising restaurant and foodservice careers. The course utilizes the ProStart School-to-Career Program curriculum created by the National Restaurant Association Educational Foundation. It is a practical curriculum that imparts real-world skills and food service concepts. It introduces students to concepts not found in more traditional programs—like customer relations, accounting, food cost controls and technical applications, and marketing. It also includes information on serving safe food, preventing accidents and injuries, and equipment. Students will learn kitchen basics, nutrition, and preparation skills of breakfast foods and sandwiches, salads and garnishes, and fruits and vegetables. Students will run the Raider Restaurant and decorate a cake.

The Culinary Arts I course could be the first step toward a promising career in the Restaurant and Hospitality industry. Students may choose to continue their high school education by enrolling in Culinary Arts II. Pursuing the national certificate of achievement helps motivate students to identify college and career goals. Throughout the 400 hours of work experience students are encouraged to get, they rotate through the operation seeing the variety of career opportunities and paths available. Students interested in receiving the national certificate of achievement and scholarship opportunities are encouraged to take a comprehensive exam at the end of each culinary course.

CULINARY ARTS II

Prerequisite: Foods, Nutrition & Wellness and Culinary Arts I

Grade level: 10-12

Counts as .5 FACS credit

Additional cost for the class: A \$15.00 fee will be assessed for food expenses.

Elective

Culinary Arts II is a semester course designed to help high school students continue working toward a promising restaurant and food service career. Like Culinary Arts I, this course utilizes the ProStart School-to-Career Program curriculum created by the National Restaurant Association Educational Foundation. The ProStart 2 program includes information on preparing for a successful career, the history of food service, the lodging industry, and the art of service. The second part of this national curriculum emphasizes marketing and the menu, purchasing and inventory and standard accounting practices. Students will receive hands on training with potatoes and grains: desserts and baked goods: meat, poultry, and seafood: and stocks, soups and sauces.

The Culinary Arts II course is for students considering a career in the Restaurant and Hospitality industry. Students are encouraged to pursue the national certificate of achievement. They may enroll in a semester of OJT experience, which will count towards the 400 hours of work experience necessary to receive the certificate. Students must also pass a comprehensive exam at the end of the course. Scholarship opportunities are available to those students completing the ProStart Program.

FOODS OJT (ON THE JOB TRAINING)

Prerequisite: Foods, Nutrition, and Wellness and Culinary Arts I & II or Foods, Foods, Nutrition, and Wellness and Food Science

Grade level: 11, 12

Counts as .5 credits

Elective

This is the final course (application level) in a vocational strand. Students will be working off-campus at different occupational/industrial foods jobs within the local community. Emphasis in this course will be place on applying food preparation skills in the workplace. Students will be supervised by both a teacher and an on-site adult.

FACS: FAMILY AND COMMUNITY SERVICES

FACS/Child Care/Guidance Management course sequence chart located on Page # 51

<u>COURSE</u>	<u>PREREQUISITE</u>	<u>YEAR</u>	<u>CREDIT</u>
Career and Life Planning	None	9, 10, 11, 12	.5
Human Growth and Development	None	9, 10, 11, 12	.5
Consumer Education	None	11, 12	.5
Family Studies	None	9, 10, 11, 12	.5
Nutrition and Wellness	None	9, 10, 11, 12	.5
Career and Community Connections	All other courses	11,12	.5

CAREER AND LIFE PLANNING

Prerequisite: None

Grade level: 9-12

Counts as .5 FACS credit

Elective

In the Career and Life Planning course students develop skills and strategies which are helpful to becoming more focused and productive individuals. The course typically emphasizes goal setting, decision making, time management, energy and stress management and identification of alternatives choices and coping strategies. Students may also explore various career and lifestyle choices. Career portfolios will also be developed.

HUMAN GROWTH AND DEVELOPMENT

Prerequisite: None
Grade level: 9-12
Counts as .5 FACS credit
Elective

In the Human and Development course, students learn about the physical, intellectual, emotional and social growth and development of infants, children, adolescence young adults and adults and their development across the life span.

FAMILY STUDIES

Prerequisite: None
Grade level: 9-12
Counts as .5 FACS credit
Elective

Family Studies helps the learner discover how parents and caregivers respond to the various stages of childhood and adolescence, and the aging process. Course includes the responsibilities and difficulties of parenthood cross the life span, fundamentals of various ages and stages of child, adolescent and adult. Emotional, cognitive, and physical development and the appropriate care of infants, children and young adults and the aging process are addressed.

CONSUMER EDUCATION

Prerequisite: None
Grade level: 11-12 or Instructor Approval
Counts as .5 FACS credit
Elective

Consumer Education provides students with an understanding of the concepts and principles involved in economic financial literacy and exploration in career opportunities. Topics may include savings, investing, credit, insurance, taxes and social security, spending patterns and budget planning, problem solving and critical thinking, contracts, and current issues that are local, state and global effect the consumer.

NUTRITION AND WELLNESS

Prerequisite: None
Grade level: 9-12
Counts as 1 FACS credit
Elective

Additional cost for the class: A \$10.00 fee will be assessed for food expenses. This course includes a study of nutrition, food preparation, food safety, home management, and interpersonal relationships. The students will learn how to measure food correctly, use large and small kitchen equipment, and prepare a variety of foods. A complete meal will be prepared during the semester. Students will spend much of the course learning about personal wellness.

CAREER AND COMMUNITY CONNECTIONS

Prerequisite: Completion of other courses
Grade level: 11-12 or Instructor Approval
Counts as .5 FACS credit
Elective

Career and Community Connections is the application level course for the learner to apply technical skills in a professional learning experience unpaid or paid, outside or within the school environment. Included will be the continued development and finalization of the student's portfolio. Career and Community Connections provides the opportunity for the learners to focus on career related topics, team building and

the effectiveness in the world of work and acquiring job seeking skills and retention needed to advance within the workplace.

TEACHING/TRAINING

<u>COURSE</u>	<u>PREREQUISITE</u>	<u>YEAR</u>	<u>CREDIT</u>
Career and Life Planning	None	9, 10, 11, 12	.5
Human Growth and Development	None	9, 10, 11, 12	.5
Teaching as a Career	Instructor Permission and 2.67 GPA	11, 12	1.0
Teaching Internship	Teaching as a Career with a "C" average.	11, 12	1.0

CAREER AND LIFE PLANNING

Prerequisite: None
 Grade level: 9-12
 Counts as .5 FACS credit
 Elective

In the Career and Life Planning course students develop skills and strategies which are helpful to becoming more focused and productive individuals. The course typically emphasizes goal setting, decision making, time management, energy and stress management and identification of alternatives choices and coping strategies. Students may also explore various career and lifestyle choices. Career portfolios will also be developed.

HUMAN GROWTH AND DEVELOPMENT

Prerequisite: None
 Grade level: 9-12
 Counts as .5 FACS credit
 Elective

In the Human and Development course, students learn about the physical, intellectual, emotional and social growth and development of infants, children, adolescence young adults and adults and their development across the life span.

TEACHING AS A CAREER

Prerequisite: Instructor permission and minimum 2.67 GPA
 Grade level: 11-12
 Counts as 1 FACS credit
 Elective

In the first FEA course, high school juniors with at least a C+ average will explore the art of teaching through classroom-based lessons coupled with school-to-career activities. FEA students will "practice" teach a sample lesson plan and, as part of the self-assessment process, be videotaped. A reflective journal will document levels of progress, as well as the resources needed to be a quality teacher. Topics addressed in Course 1 include:

- academic and psychological profile of a "good" teacher
- introduction to the National Professional Board Standards for Professional Teaching and Kansas' licensure process
- human learning: defining literacy, subject content and student assessment.
- college admissions process (part one)
- the classroom learning environment "The Mechanics of Running a Humanistic Classroom."

Students will be evaluated on their attainment of skills, knowledge, and experience and must achieve a final grade of C or higher to be recommended for the second FEA course.

TEACHING INTERNSHIP

Prerequisite: Teaching as a Career with grade of “C” or higher.

Grade level: 11-12 or instructor approval

Counts as 1 FACS credit

Elective

In the second FEA course, high school seniors will practice the art of teaching. The content aligns with National Board Standards for Professional Teaching and offers contact hours in classroom-based instruction, as well as supervised observation. The combination of the two FEA courses aligns with the Foundations of Education course taught area colleges and universities. Topics addressed in Course 2 include:

- college admissions (part 2) Getting into the College of Choice and Staying There-The Senior Portfolio.”
- the foundations of American education: A History of American Public Education from the Colonial Period to the Present.
- formal education: An Introduction to Humanity, Human Learning Theory, and Human Inclusion, Diversity, and Exceptionalities through Educational Anthropology, Educational Psychology and Educational Sociology. “How Do Children Learn?”

ART

<u>COURSE</u>	<u>PREREQUISITE</u>	<u>YEAR</u>	<u>CREDIT</u>
Drawing & Painting	None	9, 10, 11, 12	.5
Sculpture & Ceramics	None	9, 10, 11, 12	.5
Sculpture & Ceramics II	Beginning Sculpture & Ceramics with “B” average or higher	10, 11, 12	.5
Advanced Drawing and Painting	Beginning Drawing and Painting with minimum “B” average	10, 11, 12	.5
Photography	None	9, 10, 11, 12	.5
Advanced Photography	Photography with minimum “B” average	10, 11, 12	.5
Graphic Arts	Beginning Drawing and Painting, Word Processing AND Computer Applications 1A with minimum “B”: average	11, 12	1

BEGINNING DRAWING AND PAINTING

Prerequisite: None

Grade level: 9-12

Additional cost of the course: \$20 + project costs

Counts as .5 Art credit

Elective

Beginning drawing and painting is a one-semester class built on the principles and elements of design. Students will develop an understanding and use of these elements and principles through individual projects and art history.

BEGINNING SCULPTURE & CERAMICS

Prerequisite: None

Grade level: 9-12

Additional cost of the course: \$20 + project costs

Counts as .5 Fine Art credit

Elective

Beginning ceramics is a one-semester course designed to develop the basic skills needed to become a proficient potter. Students will experience a variety of hand-building techniques as well as wheel-thrown work.

ADVANCED SCULPTURE & CERAMICS

Prerequisite: Beginning Ceramics (B average or instructor permission)

Grade level: 10-12

Additional cost of the course: \$20 + project cost.

Counts as .5 Fine Art credit

Elective

Advanced Sculpture & Ceramics is a one-semester class built on the elements and principles of design. Students will expand their knowledge of these elements and principles through individual projects and art history. Building on craftsmanship, this class takes the student to the next level of creativity.

ADVANCED DRAWING & PAINTING

Prerequisite: Beginning Drawing and Painting (B Average or instructor permission)

Grade level: 10-12

Additional cost of the course: \$20 + project costs

Counts as .5 Fine Arts credit per semester

Elective

Advanced drawing, & painting is a one-semester class built on the elements and principles of design. Students will expand their knowledge of these elements and principles through individual projects and art history. Building on craftsmanship, this class takes the student to the next level of creativity.

PHOTOGRAPHY

See Communication Technology, Page 26.

ADVANCED PHOTOGRAPHY

See Communication Technology, Page 26.

GRAPHIC ARTS

See Communication Technology, Page 26.

MUSIC

<u>COURSE</u>	<u>PREREQUISITE</u>	<u>YEAR</u>	<u>CREDIT</u>
Music Appreciation	None	9, 10, 11, 12	.5
Music Theory	None	9, 10, 11, 12	.5
Jazz Band I	Instructor Permission	9, 10, 11, 12	.5
Jazz Band II	Instructor Permission	9, 10, 11, 12	1
Band	Experience	9, 10, 11, 12	.5
High Voltage	Instructor Permission	9, 10, 11, 12	1
Concert Choir	Experience OR Instructor Permission	9, 10, 11, 12	

MUSIC APPRECIATION

Prerequisite: None

Grade Level 9-12

Counts as .5 Fine Arts Credit

Elective

This course is recommended for those students needing a fine arts credit. This course is used to explore the history of music through listening and studying some of the more influential composers of the last 500 years in Western Music. We will explore how music was formed and how it affects even the music we listen to today. We will also learn about other world music. Through listening and understanding where the composer came from we gain an appreciation for our world's musical growth.

MUSIC THEORY

Prerequisite: None
Grade level: 9-12
Counts as .5 Fine Arts (Fall Semester)
Elective

This is a class for the person who wants to learn more about music. Its focus is on the development of music and how music is organized. It is offered Fall Semester only. For future professional musicians this class is a must.

JAZZ BAND

Prerequisite: Audition for director
Grade level: 9-12
Counts as .5 Fine Arts credit
Elective

Meets every other day opposite Jazz II. Students must audition for this group. Jazz festivals, tours, and many performances are part of this class. The Wamego Jazz I is gaining recognition throughout the state as one of the premier high school jazz bands. Students interested in attaining a high level of performance are encouraged to try out.

BAND

Prerequisite: Previous Band experience
Grade level: 9-12
Counts as 1 Fine Arts Credit - less than 1 full year enrollment requires permission of the instructor.
Elective

Any student with instrumental music background is encouraged to participate in the band. Be a part of a positive experience through Marching Band, Pep Band, and Concert Band.

HIGH VOLTAGE

Prerequisites: Audition for director
Grade level: 9-12
Additional cost of course (required uniform)
Counts as .5 Fine Arts credit
Elective

This class meets every other day alternating with Jazz Singers. This course is designed for singers who are interested in performing challenging vocal jazz music. It requires time and dedication.

CONCERT CHOIR

Prerequisite: Previous Choral experience is preferred
Grade level: 9-12
Additional cost of the course: None
Counts as 1 Fine Arts credit
Elective

The Concert Choir performs a wide variety of music. There are several concerts throughout the year. The choir, small ensembles, and soloists chosen from the choir, participate in music contest in the spring. Enthusiasm, dedication and the desire to achieve high standards are a must. This course is designed for people who like to sing, and who are willing to work toward performance goals of concerts and contests.

Physical Education

P.E. TEACHERS: Mr. Rick Patton (Department Head) (pattonr@usd320.com)
Ms. Julie Baer (baerj@usd320.com)

COURSE TITLE	CREDIT	GRADE LEVEL	PREREQUISITE
Physical Education – COED	1	9-10 (recommended 9 th)	None
Weightlifting	½ or 1	9-12 (9 th on approval)	P.E.
Advanced P.E.	½ or 1	10-12	P.E.
Lifetime Fitness	½	10-12	P.E.
Outdoor Rec.	½	10-12	P.E.
Advanced Weights	½ or 1	11-12	P.E. & Weights

Additional cost of the course: Towel fee \$3.00/semester, ½” notebook with paper, pencil, and P.E./Advanced P.E./Weights T-shirt with designated logo

PHYSICAL EDUCATION & HEALTH:

COURSE DESCRIPTION: This is a required course which should be completed by the sophomore year. This course consists of physical education concepts and activities including team games, individual activities, rhythmic activities and health. Health units will be incorporated into the physical education class throughout the school year. The health units will consist of nutrition and human sexuality education. Students will gain a better understanding of the dynamics of nutrition and human sexuality, including discussions of abstinence, prevention of pregnancy, sexually transmitted diseases, HIV/AIDS, rape/abuse and common concerns of adolescents. Students will be given fitness and skills testing and written tests. Students during the health unit can expect lectures, homework, and written tests over the material covered.

COURSE OBJECTIVES: This course is designed to create/maintain an active and healthy lifestyle. To achieve this, various activities will be introduced. This introduction will include how to exercise properly, why exercise and fitness are important, and what each person’s individual exercise and fitness needs are. It is a goal of this class to present the opportunities for students to improve and continue to promote a healthy active lifestyle for years to come.

STUDENT OUTCOMES: Students will be more aware of their own fitness level and health habits. They will also be familiar with methods to maintain and improve these conditions. Students will maintain or improve health-related fitness components of flexibility, strength, and cardiovascular fitness.

PHYSICAL EDUCATION UNITS:

- | | |
|-------------------------------|--|
| Week 1: Rules/Locks | Week 21: Aerobics |
| Week 2: Team Building/Games | Week 22: Badminton |
| Week 3: Fitness Testing | Week 23: Badminton |
| Week 4: Volleyball | Week 24: Badminton |
| Week 5: Volleyball | Week 25: Badminton |
| Week 6: Volleyball | Week 26: Sex Education |
| Week 7: Walking/Jogging | Week 27: Sex Education |
| Week 8: Walking/Jogging | Week 28: Sex Education |
| Week 9: Soccer | Week 29: Sex Education |
| Week 10: Nutrition | Week 30: Frisbee Golf/Ultimate Frisbee |
| Week 11: Nutrition | Week 31: Orienteering |
| Week 12: Nutrition | Week 32: Softball |
| Week 13: Self-Defense | Week 33: Softball |
| Week 14: Self-Defense | Week 34: Tennis |
| Week 15: Self-Defense | Week 35: Tennis |
| Week 16: Basketball/Omni Ball | Week 36: Outdoor Games (Bocce ball, Croquet) |
| Week 17: New Games | Week 37: Fitness Testing |
| Week 18: Bowling | Week 38: Games/Check In Locks |
| Week 19: Bowling/Finals | Week 39: Finals |
| Week 20: Aerobics | |

- *Units may vary from week to week due to unforeseen occurrences*

WEIGHTLIFTING:

COURSE DESCRIPTION: This course is designed to teach proper weightlifting techniques. Students will acquire a basic understanding of muscle/skeletal anatomy through written quizzes. A major emphasis is placed on development of lifting technique. This class concentrates on improving muscular strength, agility, cardiovascular endurance and athletic performance. The development of strength, power, agility and quickness will be stressed using free weights, kinetic equipment, plyometrics, and agility/quickness drills. This class deals only with weight training and students taking this class must have an interest in this area. In order to take consecutive semester a student must pass the previous semester with a B- or higher.

COURSE OBJECTIVES: This course is designed to create/maintain health-related fitness components of flexibility, cardiovascular fitness, muscular strength and endurance. It is a goal of this class to present the opportunities for students to improve and continue to overcome inhibitions about lifting weights and to demonstrate proper lifting techniques.

STUDENT OUTCOMES: Students will be familiar with the safety rules that need to be followed when using the wt. room. They will also maintain and improve their understanding of the Bigger, Faster, Stronger workout program. Students will demonstrate proper lifting technique while maintaining and improving their muscular strength and endurance and cardiovascular fitness.

LIFETIME FITNESS:

COURSE DESCRIPTION: This course is designed to create/maintain an active and healthy individual lifestyle. To achieve this, various activities will be introduced. This information will include how to exercise properly, why exercise and fitness are important, and what each person's individual exercise and fitness needs are. It is the goal of this class to present the opportunities of improved health so students will contribute to be active and live healthy lifestyles once the class has ended. Lifetime Fitness class is attempting to promote just what its course title suggest; active healthy lifestyles.

COURSE OBJECTIVES: This course is designed to create/maintain an active and healthy lifestyle. To achieve this, various aerobic activities will be introduced. This introduction will include how to exercise properly, why exercise and fitness are important, and what each person's individual exercise and fitness needs are. It is a goal of this class to present the opportunities for students to improve and continue to promote a healthy active lifestyle for years to come.

STUDENT OUTCOMES: Students will be more aware of their own fitness level and health habits. They will also be familiar with methods to maintain and improve their health. Students will complete a series of assessments designed to assess various components of physical fitness, including cardiovascular status, flexibility, body composition, muscular strength and muscular endurance. Students will become more physical fit and more efficient in daily life. Students will demonstrate the ability to design and implement a personal physical fitness program. Students will describe the values of physical fitness to society and to individuals.

UNITS: (Note: Activities may change)

Pickleball

Aerobics (TaeBo, Turbo Jam, Pilates, etc.)

Biking (Cycling)

Koob/Washers

Disc Golf/Ultimate Frisbee

Walking/Jogging

Table Tennis (Ping Pong)

Line/Social Dance

Horseshoes

Croquet/Bocce Ball

Golf

Swimming/Water Aerobics

OUTDOOR REC:

COURSE DESCRIPTION: Enrich your life, expand your horizons and strengthen your body and mind. Students enrolled in this class will learn new skills, gain practical knowledge and experience the wonders of the great outdoors ... all while having fun and being physically active. This course consists of an introduction to a variety of outdoor recreation skills and activities associated with the natural environment. Such activities include: team building/ropes course, fishing/fly fishing, orienteering/geocaching, hiking, backpacking, camping, knot tying, mountain biking, hackey sack, disc golf, archery and first aid/CPR. This course emphasizes participation and leadership in "lifetime leisure" outdoor recreational activities. Students enrolling in this course must be responsible mature young adults due to the activities in this course (ex. Archery). **Class is limited to 20 students.**

COURSE OBJECTIVES: This course is designed to help the student better understand the role of recreation and leisure in our society, while creating/maintaining an active and healthy lifestyle in an outdoor setting. To achieve this, various activities will be introduced. It is a goal of this class to present the opportunities for students to improve and continue to promote a healthy active lifestyle in a non-traditional classroom setting for years to come.

STUDENT OUTCOMES: Students will develop skills which allow them to safely enjoy outdoor recreation activities. They will have an increased interest in nature and ecology. Students will participate in various outdoor recreation activities. Students will be more aware of their own physical fitness level. They will also be familiar with methods to maintain and improve these conditions by means of outdoor leisure activities. Students will maintain or improve health-related fitness components of flexibility, strength, and cardiovascular fitness.

COURSE GOALS: Students who complete this course are expected to:

1. Have an increased interest in nature and ecology.
2. Develop a variety of skills which allow students to safely enjoy outdoor recreational activities.
3. Participate in various outdoor recreational activities.
4. Have an increased understanding of outdoor education.
5. Demonstrate the ability to work as individuals and collaborate with others to accomplish tasks or reach goals when involved in various physical recreational activities.
6. Demonstrate the ability to independently and willingly participate in outdoor pursuits and other physical activities that contribute to the attainment of personal goals and maintenance for wellness.
7. Use technological tools (compass, GPS, etc.)
8. Demonstrate appropriate responses for the use of first aid/CPR. Identify situations or health conditions that can cause cardiopulmonary arrest.

NOTES:

PHYSICAL EDUCATION/HEALTH RATIONALE

Fitness is important to everyone. It is becoming increasingly clear that high levels of physical fitness contribute to healthier, more productive, longer and healthier lives. Physical activity promotes development of the emotional, social and mental self. Fit people have a higher level of self-esteem and self-confidence.

Some of the specific advantages that have been associated with regular aerobic exercise are:

1. reduced risk of heart attack
2. improved immune response
3. reduced risk of fitness
4. lower resting heart rate
5. a greater ability to sleep better
6. muscle relaxation, a greater resistance to fatigue
7. lower blood cholesterol
8. increased blood metabolism
9. lower blood pressure
10. increase in the percentage of muscle
11. decrease in the percentage of stored fat.

- This course will include basic backpacking skills.
- Introduction to orienteering. Interpret different scales of maps and use of compasses and GPS. Provide students with the opportunity to learn and develop map and compass skills. Specific skills and knowledge include reading and understanding maps, land navigation techniques, and sport orienteering.
- Introduction to outdoor skills related to camping and hiking. Skills covered will include camp craft, equipment and clothing selection and safety in a wilderness setting.
- Hiking to develop and maintain physical fitness.
- Principles and practices of mountain biking in the local area. Emphasis on recreational and fitness components. Basic ability to ride a bicycle. Mountain bike and helmet required (equipment is available if needed).

ADVANCED WEIGHTS:

COURSE DESCRIPTION: This course is designed to enhance the proper weightlifting techniques. Students will acquire a basis understanding of muscle/skeletal anatomy through written quizzes. A major emphasis is placed on development of lifting technique based on the athletes sport. This class concentrates on improving muscular strength, agility, cardiovascular endurance and athletic performance. The development of strength, power, agility and quickness will be stressed using free weights, kinetic equipment, plyometrics, and agility/quickness drills. This class deals only with weight training and students taking this class must have taken physical ed. class and weights class and have an interest in this area. In order to take consecutive semester a student must pass the previous semester with a B- or higher.

COURSE OBJECTIVES: This course is designed to create/maintain health-related fitness components of flexibility, cardiovascular fitness, muscular strength and endurance. It is a goal of this class to present the opportunities for students to improve and continue to overcome inhibitions about lifting weights and to demonstrate proper lifting techniques.

STUDENT OUTCOMES: Students will be familiar with the safety rules that need to be followed when using the wt. room. They will also maintain and improve their understanding of the Bigger, Faster, Stronger workout program. Students will demonstrate proper lifting technique while maintaining and improving their muscular strength and endurance and cardiovascular fitness.

WORLD LANGUAGE

<u>COURSE</u>	<u>PREREQUISITE</u>	<u>YEAR</u>	<u>CREDIT</u>
Spanish I	None	9, 10, 11, 12	1
Spanish II	Spanish I	9, 10, 11, 12	1
Spanish III	Spanish II	10, 11, 12	1

WHY TAKE A WORLD LANGUAGE?

Acquiring a world language opens opportunities in the job world, and it is a fun and efficient way to communicate with people from other cultures. Students who learn a world language have been proven to perform better on ACT and SAT's. Also, many colleges recommend two years of the same world language in high school as do some scholarships. Therefore, it is useful whether the student plans to go straight into the job world or on to college. A world language helps to open your eyes to the world around you and your mind to other people and cultures. An acquired language can help in the pursuit of a job either in the United States or abroad.

SPANISH I

Prerequisite: None
Grade level: 9-12
Recommended for students interested in other cultures
Counts as 1 World language credit
Elective

This first year class offers an introduction to the Spanish language. The emphasis is on oral communication with a focus on culture, verb structures, and vocabulary. Spanish one is designed for students to acquire the basics of the Spanish language. The emphasis is on understanding, reading, writing, and speaking Spanish at a Novice level.

SPANISH II

Prerequisite: Spanish I
Grade level: 9 with two years of Spanish in MS 10-12
Recommended for students interested in being able to speak Spanish more fluently.
Counts as 1 World language credit
Elective

Spanish II continues the study of the Spanish language and cultures. Students work to increase conversational ability, knowledge of vocabulary and verb structure. The focus of the class is on the students' oral skills and aural skills.

SPANISH III

Prerequisite: Spanish II

Grade level: 10-12

Counts as 1 World language credit

Recommended for all students that would like to speak a second language, or major or minor in Spanish at the university level.

Elective

Spanish III builds on the study of the Spanish language and culture. Students spend much time in conversational Spanish. There is still an emphasis on the culture and history, but much more time is dedicated to practice speaking the language and understanding the structure of the language. Students do more reading of Spanish Literature.

ADDITIONAL

<u>COURSE</u>	<u>PREREQUISITE</u>	<u>YEAR</u>	<u>CREDIT</u>
Peer Counselor	Student Body Selection	10, 11, 12	.5
Peer Tutor	Instructor Permission	11, 12	1
Independent Study	Application Process	11, 12	1
Student Aide	Instructor Permission	12	0

PEER COUNSELOR

Prerequisite: Student body selection, sponsor approval, training

Grade level: 10-12

Counts as .5 credit for the year

Elective

Recommended for students who enjoy helping others. The Peer Counseling Program trains students to provide support needed for a variety of situations. Training consists primarily of listening and communication skills, as well as strategies in decision-making. Peer counselors are also trained to refer students to other agencies when the need arises. Students are required to take peer counseling as a class 1st semester

PEER TUTOR

Prerequisite: Application to the program /with teacher recommendations. (Available from Mrs. Wyatt).

Grade level: 11-12

Recommended for students interested in any helping profession. Must have skills in Math, English, and Science.

Counts as 1 credit

Elective

Peer tutors are trained in tutoring techniques at the beginning of the school year. Peer tutors assist students in understanding materials, organizing, and studying for tests.

INDEPENDENT STUDY

The goal of the Wamego High School Independent Study program is to give students the opportunity to apply their learning beyond the available high school curriculum. Students must complete Independent Study Academic Contract and Action Plan as part of final approval process. Forms can be picked up in the counseling department

Junior and Senior students are eligible to apply for Independent Study for elective credit.

Independent Study cannot take the place of a required course.

Interested students should contact a teacher in their chosen Independent Study field to discuss opportunities which may be available. Some ideas include:

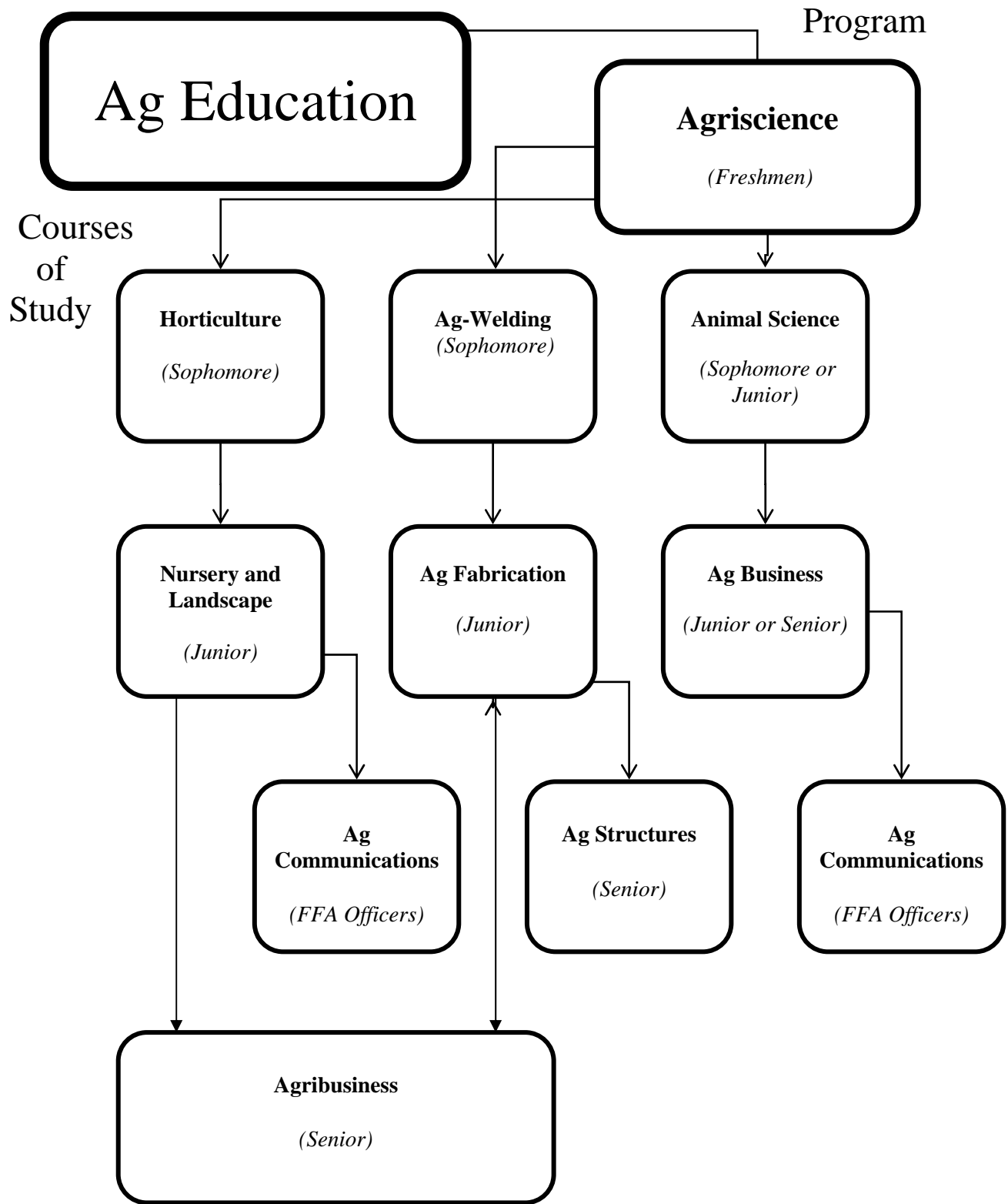
- Complete a detailed project which cannot be completed as part of a traditional class.
- Work with a professional in the community who can provide learning experience beyond what can be offered in the classroom.
- Shadow a variety of professionals to determine your career interests beyond high school and complete a portfolio of career areas you have shadowed.

STUDENT AIDE

1. Student must be a senior.
2. No credit is awarded for this class.
3. Teacher Aides will be chosen through an application process.
 - A maximum of two teacher aides only will be assigned for blocks 1, 2, 3, 4, 5, 6, 8.
 - Teacher Aides will report to Dr. McFarlin in the library.
 - Individual teachers may request a teacher aide for their classroom only through a request and approval process with Mrs. Workman. This process also includes teachers in other USD 320 buildings. Teacher aides may be sent to classrooms during their shift to retrieve or deliver materials, or work with the teacher when appropriate.Teacher Aide application process will include:
 - Written recommendation from at least one core subject teacher, including a rating system of students' life-skills.
 - Attendance check (tardies and absences).
 - Discipline referral check.
 - Completed and signed application form with class schedule and possible conflicts noted.
4. A student may be an aide only one block per semester
5. A student may not be a student aide and peer tutor during the same semester.

CAREER & TECHNICAL EDUCATION

(CTE)

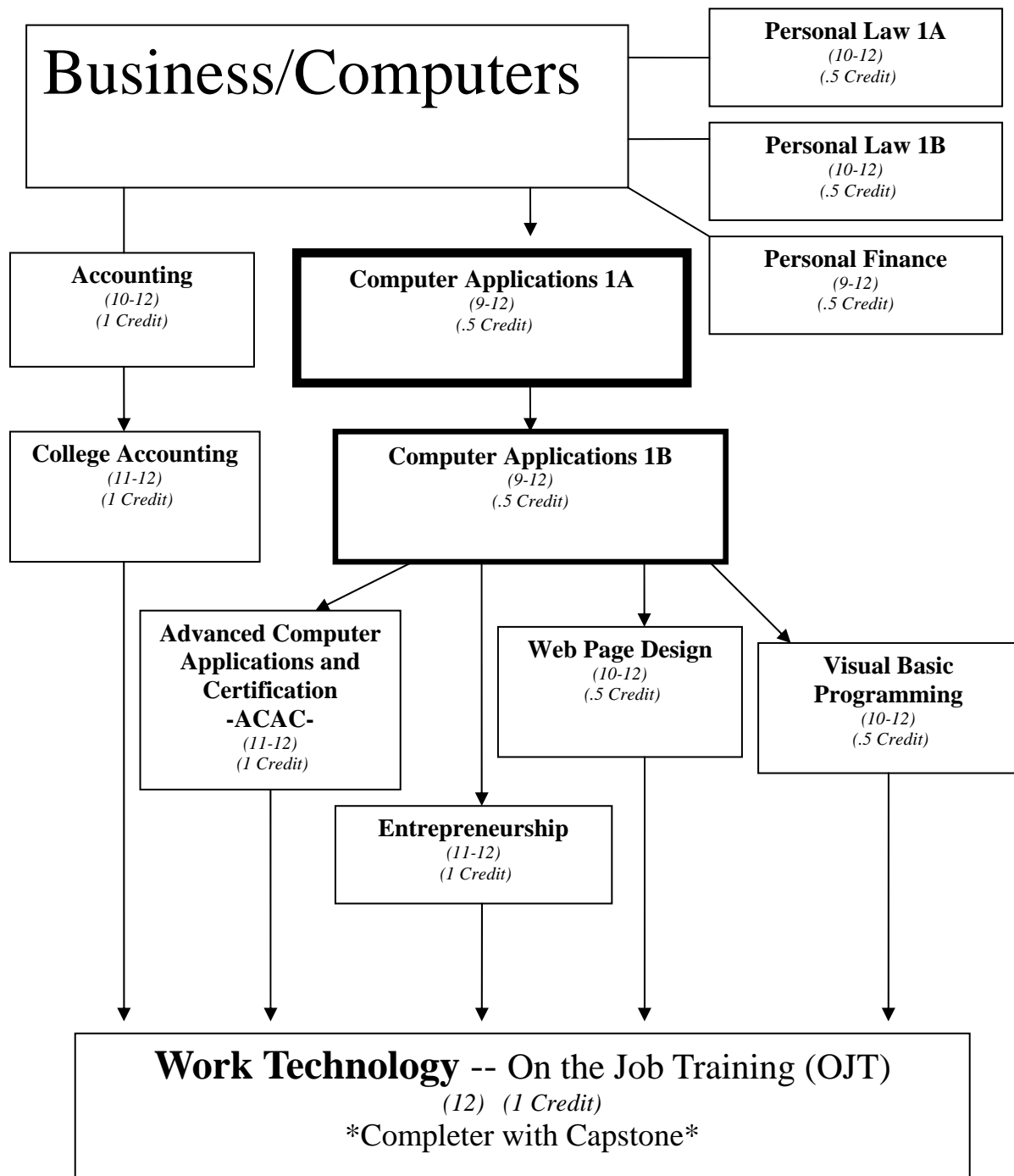


CAREER & TECHNICAL EDUCATION

(CTE)

Program Courses of Study

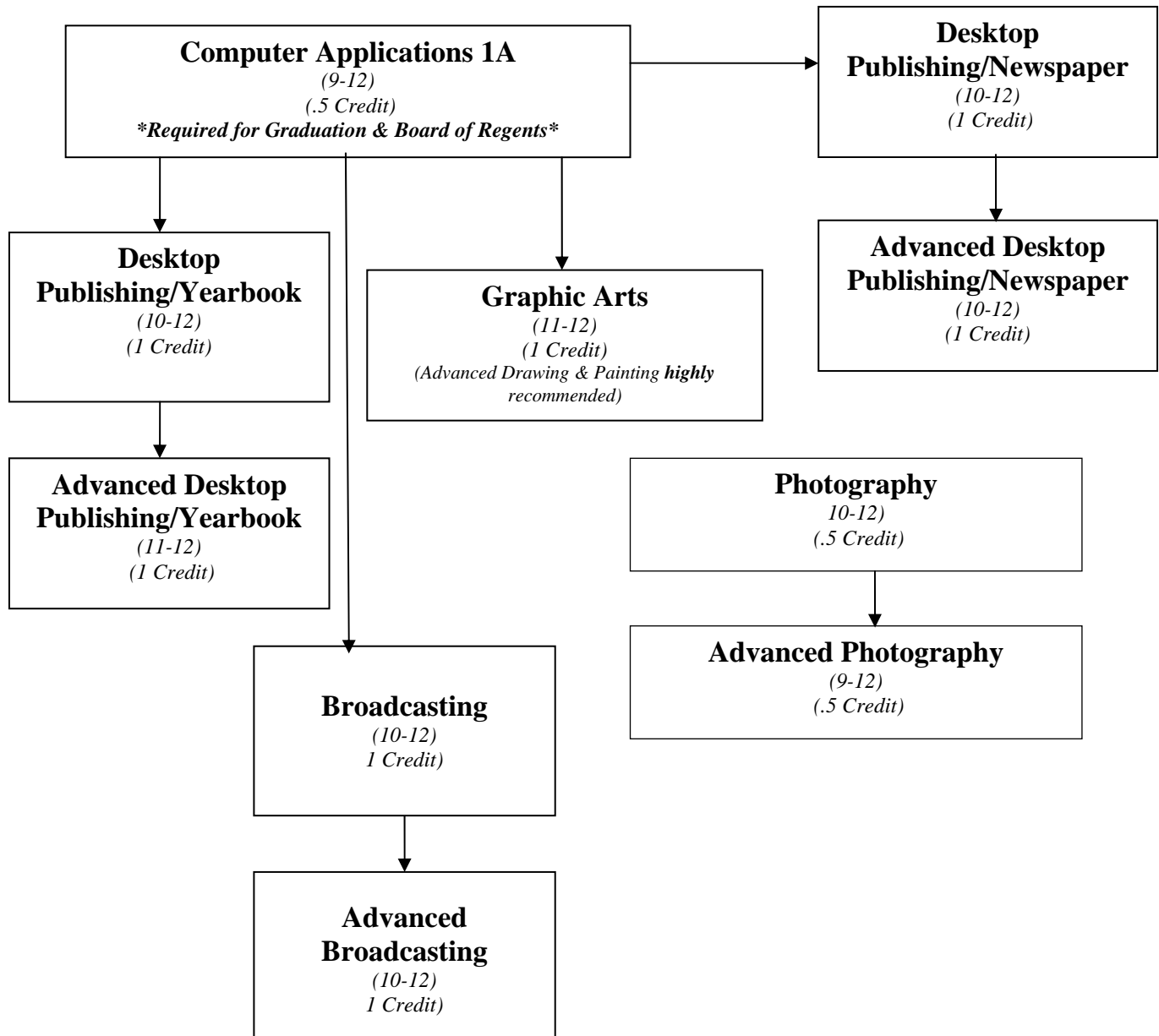
BUSINESS AND COMPUTERS



CAREER & TECHNICAL EDUCATION (CTE)

Program Courses of Study

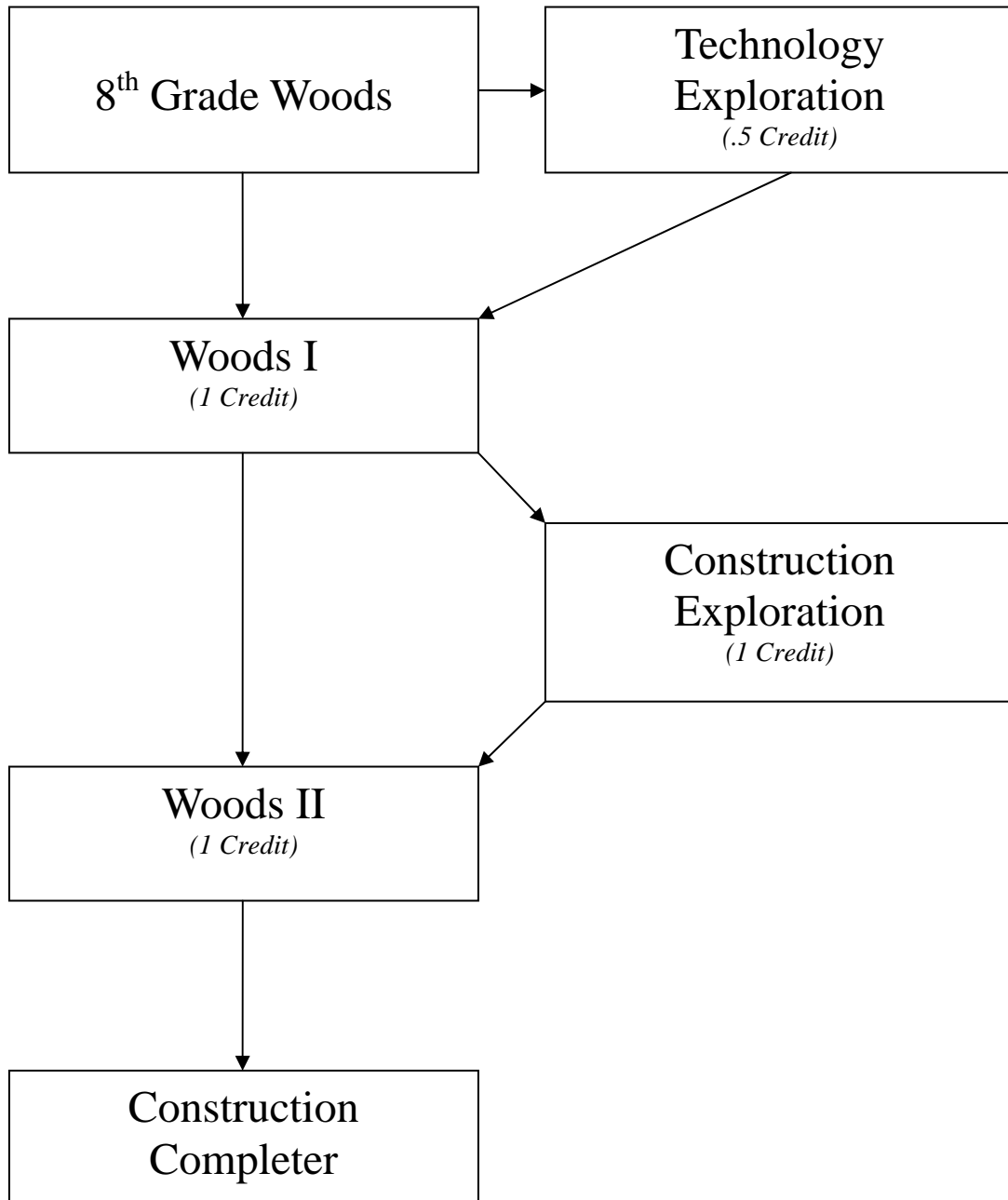
COMMUNICATIONS TECHNOLOGY



TECHNICAL EDUCATION (CTE)

Program Courses of Study

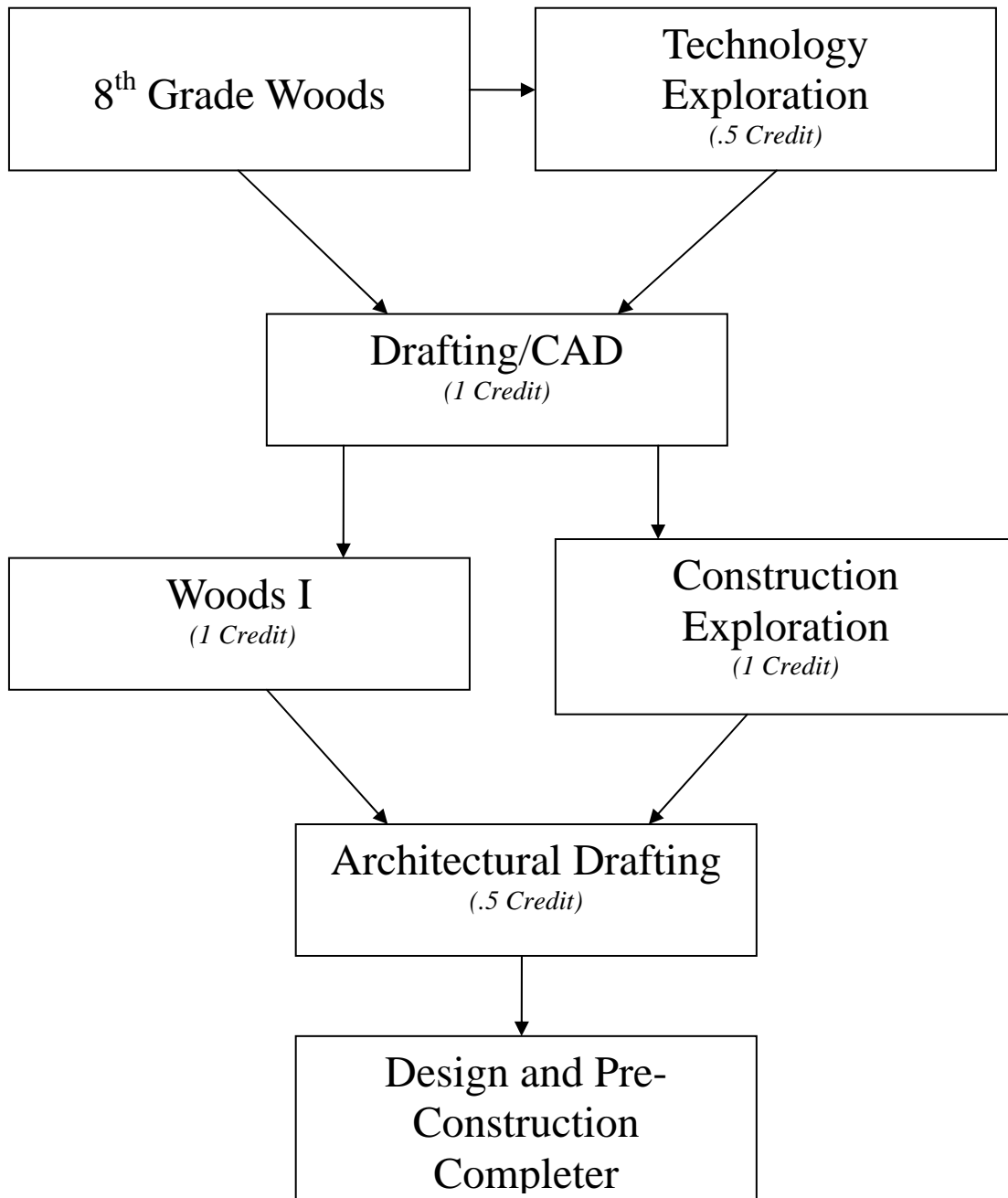
CONSTRUCTION



CAREER & TECHNICAL EDUCATION (CTE)

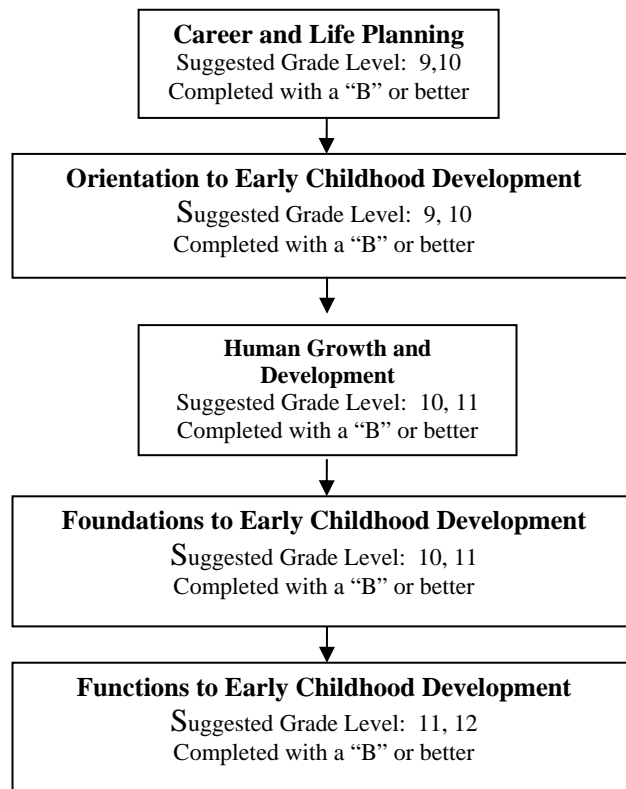
Program Courses of Study

DESIGN AND PRE-CONSTRUCTION



CAREER & TECHNICAL EDUCATION (CTE) PROGRAM COURSES

FACS: EARLY CHILDHOOD EDUCATION



- ❖ Strengthening the well-being of individuals and families across the life span.
- ❖ Becoming responsible citizens and leaders in family, community, and work settings.
- ❖ Appreciating human worth and accepting responsibility for one's actions and success in family and work life.
- ❖ Preparing individuals for a productive workforce.
- ❖ Developing successful life management, employment, and career development.
- ❖ Preparing individuals to be continuous, life-long learners.

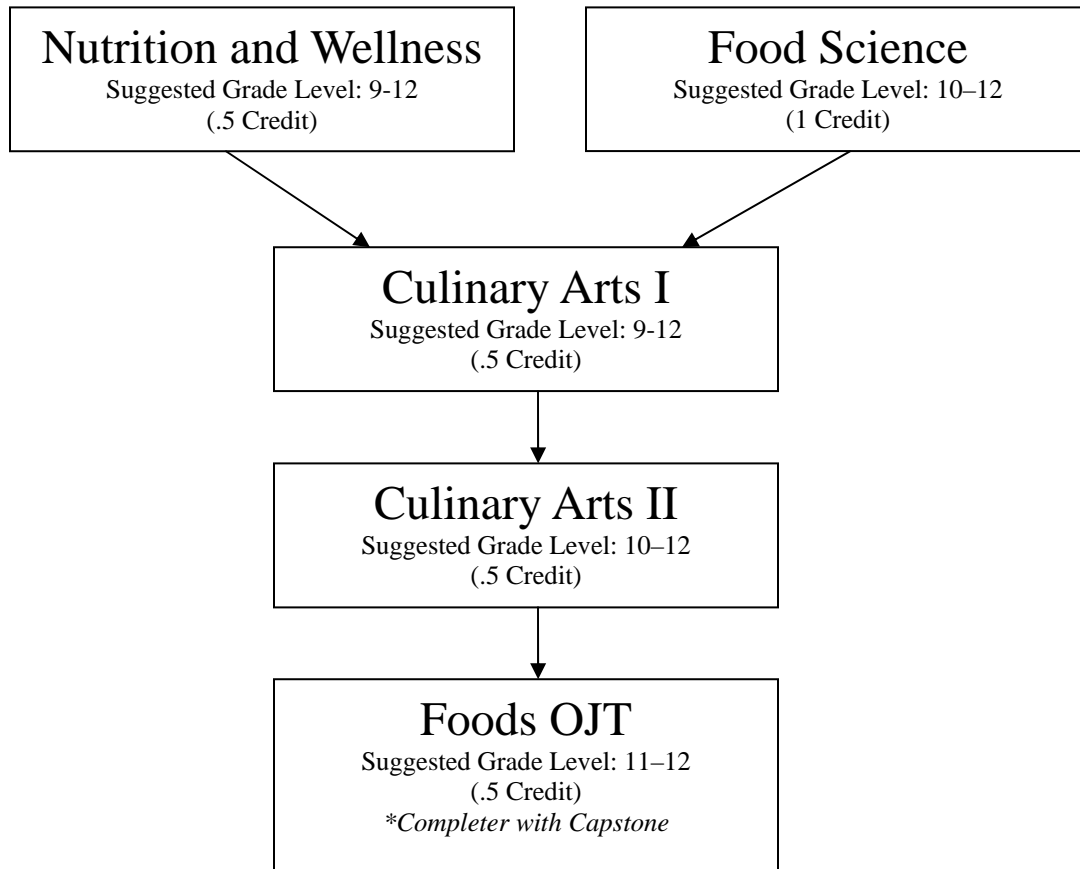
Enrolled: A junior who has completed three courses in the Early Childhood Education and Human Services within the Family and Consumer Science Department.

Completer: A senior who has completed the four courses (with capstone) in the Early Childhood Education and Human Services within the Family and Consumer Science Department. Senior completers are awarded a certificate of completion in the Early Childhood Education and Human Services Program at the Spring Awards. Articulation agreements with HCC and CCCC are available for senior completers of the Early Childhood Education and Human Services program along with the Kansas Work Force Apprenticeship Program.

CAREER & TECHNICAL EDUCATION (CTE)

Program Courses of Study

FACS: CULINARY ARTS AND HOSPITALITY



What is the purpose of the Culinary Arts and Hospitality Program at Wamego High School?

- To prepare students for careers and higher education programs of study related to culinary arts and the hospitality industry.
- To strengthen the student's knowledge of safety and sanitation procedures.
- To help teach students the correct use of food production equipment and tools.
- To demonstrate preparation of all menu categories to produce a variety of food products.
- To apply mathematical, reading, writing, and science skills to correctly deliver food products and guest services.
- To identify costs, pricing, and market trends in the hospitality industry.

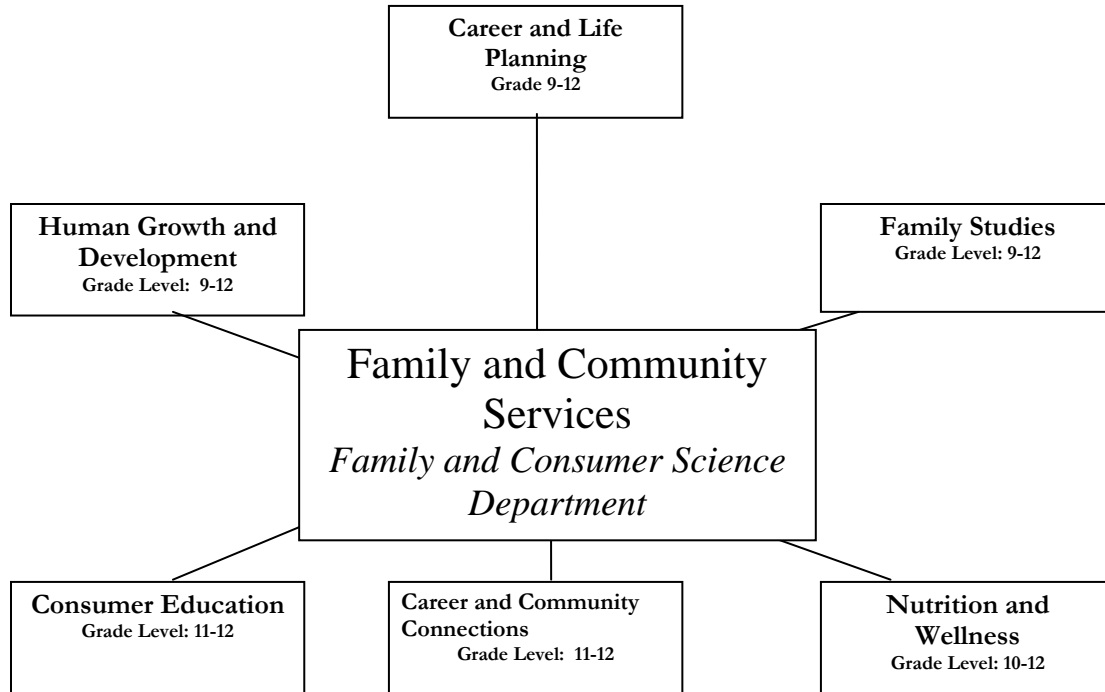
Enrolled: A junior who has completed three courses in the Culinary Arts and Hospitality Program within the Family and Consumer Sciences Department.

Completer: A senior who has completed three courses (one of which is the capstone) in the Culinary Arts and Hospitality program within the Family and Consumer Sciences Department. Senior completers are awarded a certificate of completion in the Culinary Arts and Hospitality Program at the Spring Awards Night. Students who complete Culinary Arts I and II, passed the national tests, and who have completed 400 hours of work experience (including Foods OJT hours) will receive the national ProStart certificate from the National Restaurant Association, as well as becoming eligible for scholarships.

CAREER & TECHNICAL EDUCATION (CTE)

Program Courses of Study

FACS:FAMILY AND COMMUNITY SERVICES



What is the purpose of the Family and Community Services Program at Wamego High School?

- To prepare students for careers working with individuals and families as well as for competence in the work of their own families.
- Designed to address life management skills and to explore related careers.
- Develop their technical knowledge and skills related to the work of a family and within their chosen careers.
- To help prepare students for further education and career development in Family and Consumer Sciences.

Enrolled: A junior who has completed three courses in the Work and Family Program within the Family and Consumer Science Department.

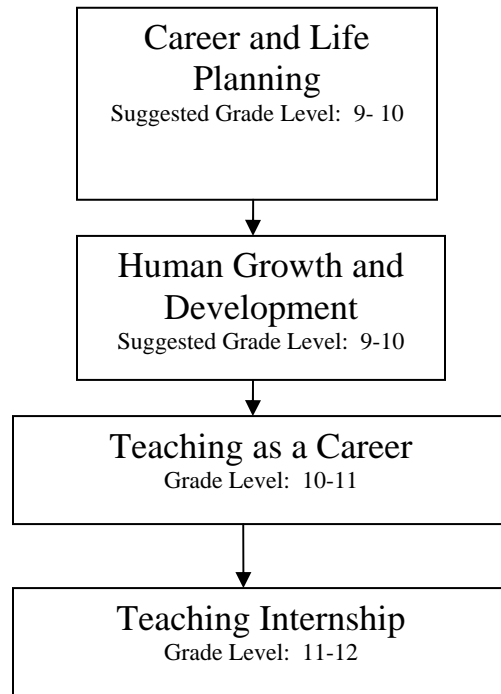
Completer: A Senior who has completed three courses in the Work and Family Program within the Family and Consumer Science Department.

***Senior completers are awarded a certificate of completion in the Work and Family Program at the Spring Awards Night. College transfer of credit is available at Highland Community College for the field of counseling and social work.**

CAREER & TECHNICAL EDUCATION (CTE)

Program Courses of Study

FACS: TEACHING TRAINING



Transfer of college credit is available to students with Highland Community College in the Elementary and Secondary Education Associates Program.