

2011-2012 West Elementary



Band Handbook

TABLE OF CONTENTS

Introduction.....	3
Calendar.....	4
Policies/ Procedures.....	5
Procedures/Conduct.....	6-7
Concert Dress.....	7
Needed Equipment.....	8
Grading.....	8-9
After School Band Program.....	10
Handbook Acknowledgement.....	11



INTRODUCTION

Membership in the West Elementary School Band program is a privilege and an honor. It is expected that you will do your best in classroom participation and performance to continue the strong tradition of great bands in Wamego. It is the director's job to make sure that you are presented with the best music and rehearsals possible to help you in your growth as a musician.

This handbook has been prepared for the West Elementary Band so that you and your parents know the expectations for the 2011-2012 school year.

Your experience in the Wamego bands is bound to be an exciting one. Through cooperation and positive goal setting, we will maintain the excellence that has come to be associated with the Wamego Bands. We are looking forward to having you with us.

Mrs. Gartner

Mr. Richmond

WMS 456-7682 ext. 4036 456-7682 ext. 4035
West: 456-8333 ext 5035

Email :
gartners@usd320.com richmond@usd320.com

BAND CALENDAR 2011-2012

November

10th – 5th Grade
Band First Concert
7:00 p.m. @ West

February

21st – 5th Grade
Band Concert 7:00
p.m. @ West

May

8th– 5th-8th Grade
Band Concert
@WMS 6:30 p.m.

POLICIES AND PROCEDURES

Band Classes

Band will meet every day through the school year. At the beginning, Mrs. Gartner will rehearse Woodwinds (Flutes, Clarinets & Saxophones) and Percussion on stage and Mr. Richmond will rehearse Brass (Trumpets, Trombones and Baritones). Once they are progressing well the band will practice together on the stage with both Mrs. Gartner and Mr. Richmond.

The Band Rehearsal Area

The stage area and storage room should be kept clean and organized at all times. Make sure all equipment and music is stored away properly after every rehearsal. An orderly room helps prevent accidents. Please take care of chairs, stands, and other band equipment as if it were your own. If you damage equipment, you will be responsible for replacing it. The best thing to do is to leave the room in better shape than you found it!

Lockers

You may bring your own lock from home. We would ask that you bring a combination lock and please know that the hasps are fairly narrow so a regular pad lock is often too thick. We recommend that you use a lock as it helps deter theft and vandalism. The school will not be responsible for damaged or missing instruments not secured by a lock.

School Owned Instruments

There is a small rental fee of \$25.00 for students using school-owned instruments, including percussion. You will be given a rental agreement form to complete which should be returned with a check made out to USD 320. This fee will pay for any maintenance, repairs and cleaning of the instruments. Additional fees may be charged if excessive wear and tear (abuse) on an instrument warrants.

CLASSROOM PROCEDURES

Procedures

1. Entering the Room:

Enter quietly, go to your locker, get your instrument, sit down and get set for the class. There should be no playing of instruments until the director starts.

2. Starting Class:

A call and response clapping will signify the start of class.

3. Announcements:

Announcements and reminders will be made at the beginning of class once the class is quiet. Questions will be answered at this time.

4. Daily Participation:

Students must have all the necessary items for class. They should demonstrate a positive attitude and be an active participant in class.

5. Stay in Your Seat:

If you need to get up for any reason, raise your hand and someone will be around to help you. Do not wander around the room without permission.

6. Stop When the Director Stops:

A good band will stop immediately and listen for instructions.

7. The Clock Does Not Dismiss You, The Director Does.

CLASSROOM CONDUCT

Because of the size of our class, a student's behavior plays a large part of our productivity. Students can expect the following responses to their conduct in class.

For Appropriate Behavior

1. Honest praise for your efforts.
2. Positive notes home.
3. Positive phone calls or E-mail to home.

For Inappropriate Behavior

1. One on one talk– student and director.
2. Phone call or E-mail to parents.
3. Discipline form–contact principal & parents.
4. Meeting with parents & principal.

SEVERE BEHAVIOR CLAUSE: The directors reserve the right to send a student to the office if disruptive or inappropriate behavior warrants it.

CONCERT DRESS

Concert dress for 5th grade is as follows:

Nice dress clothes (could include dress shirts, khaki pants, dresses, skirts, polo shirts). If you have a question about what is acceptable, please ask.

The following items ARE NOT acceptable:

Dirty clothing, torn or shredded clothing, shorts, t-shirts, anything not allowed by the school handbook.

NEEDED EQUIPMENT

Students are responsible for purchasing/ maintaining their own:

1. Reeds
2. Valve or slide oil
3. Drum sticks
4. Cleaning supplies
5. **Essential Elements 2000 Series Book One**

Reeds, Cleaning Supplies, Oil, etc.

It is your responsibility to come to class prepared with the equipment you need to play. Make sure that you have everything you need every day. Showing up to class without reeds is the same as coming to class without your horn. You can order items through Glenn's Music which makes weekly stops at the school.

GRADING PROCEDURES

There are four parts to your grade in band:

Daily Grade **40%**

This is the grade for your daily rehearsal participation. If you come to class on time with everything you need and make a good effort in class without disrupting rehearsal you will get 10 points a day. FYI- no instrument or music = no points.

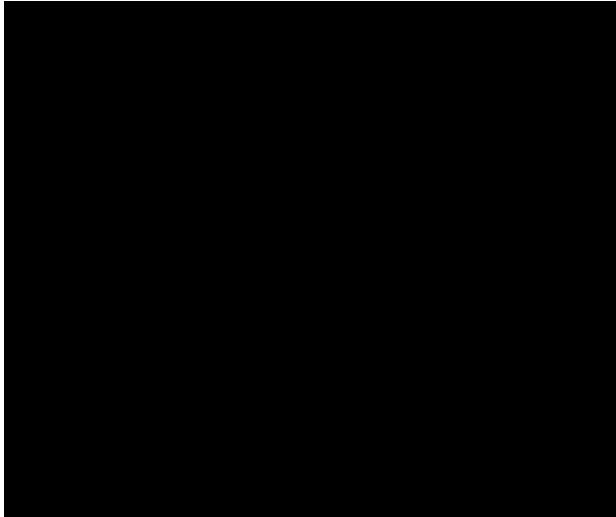
Playing Tests **30%**

The tests will cover material that we are working on in class. Students will be graded on scales, tone, rhythm, technique, and musicality. Students will be given testing material a minimum of one week prior to the test.

Practice Cards

10%

Practice is vital to the success of any performing group. Think of it as band homework.



Practice Cards will be due on the first two class days of every week. Your cards will be graded and returned each week. New cards will be handed out at mid terms and the beginning of each grading period. Try to get them turned in on time. If you forget, you have one week to get it in after that you will lose credit.

Concert Performances

20%

Performances are a vital way of displaying the student's abilities and talents. Every student plays a vital part in the Wamego Middle School Bands. All concert performances are **required** and are 30% of your final 9 weeks grade. **Directors must receive written notice two weeks before a concert that you are unable to attend, if no notice or reason is given, the result will be a "0" for that concert.** Emergencies will be considered on an individual basis. Please contact either Mrs. Gartner or Mr. Richmond as soon as possible if this should occur. Unexcused absences get a 0% for the concert grade.

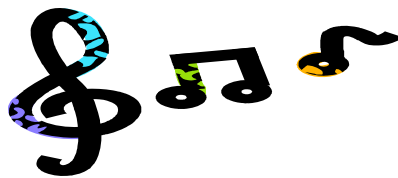


After School Band Program

West offers free group lessons after school every Monday. As the students will be grouped with other like instruments, this is a great opportunity for students to work in a small group setting and move at their own pace as well as focus on specific instrument issues. This program is not for a grade and is completely voluntary. We will send out more information once school has started. The schedule is as follows.

3:30-3:50	Flutes and Trumpets
3:50-4:10	Clarinets and Trombones
4:10-4:30	Saxes and Percussion

**We are looking
forward to
a wonderful year of great music and fun.
Let the Music Begin!**



HANDBOOK ACKNOWLEDGEMENT

We, the undersigned, have read the West Elementary Band Handbook for 2011-2012 School Year. We understand that band is a year long commitment and we agree to meet the requirements as they are provided to the best of our abilities. We also understand that these requirements form the basis for enrollment in band and for a successful band experience.

Print Student Name

Student Signature

Parent Signature

Date

*Having this signed and returned is your student's first homework assignment. Please return this page signed, to Mrs. Gartner or Mr. Richmond by **Friday, September 2nd**.